



**Department of Economic  
and Development Services**

**Memorandum**

**To:** Planning Commission  
**From:** Edward Lehman, Director of Planning and Zoning  
**Date:** October 5, 2021  
**Re:** Comprehensive Plan Map Amendment to Map 1 of the Transportation Element

---

**INTRODUCTION**

This is a County-sponsored amendment to the 2040 Comprehensive Plan for an amendment to Map 1 of the Transportation Element. The purpose of the Map Amendment is to coordinate the Future Improvements Map with the project list from the Mobility Plan, which serves as the basis for determining those projects to be funded by the recently adopted Mobility Fee..

**DATA AND ANALYSIS**

TRA Policy 1.1.1 states the following:

“Maintain a *Transportation System Map Series* that:

- 1) establishes the Existing Transportation Facilities identified in the Future Traffic Circulation Map as the official listing of existing arterial and collector roadways, including number of lanes, functional classification and maintenance responsibility for Clay County
- 2) establishes the Bicycle/Pedestrian Facilities Maps as the official listing of existing bicycle and pedestrian facilities for Clay County
- 3) establishes the Public Transit System Map as the official listing of existing transit routes for Clay County
- 4) establishes the Ports, Aviation and Rail Map as the official listing of these facilities for Clay County
- 5) includes the Future Traffic Circulation Map indicating all arterial and collector roadways that will provide for adequate traffic circulation within Clay County over the planning period, indicating the number of lanes, functional classification and maintenance responsibility.

Figure 1 from The Transportation Element of the Clay County 2040 Comprehensive Plan shows the improvements determined necessary at the time of adoption. The following improvements

were included in the Mobility Plan and should be added to Figure 1 of the Transportation Element as shown on Figure 2.

- S.R 100 – Widen from 2 lanes to 4 lanes
- S.R. 21: C.R. 215 to S.R. 16 - Widen from 2 lanes to 4 lanes
- C.R. 315: C.R. 315 Extension to S.R. 16 - Widen from 2 lanes to 4 lanes

Figure 1

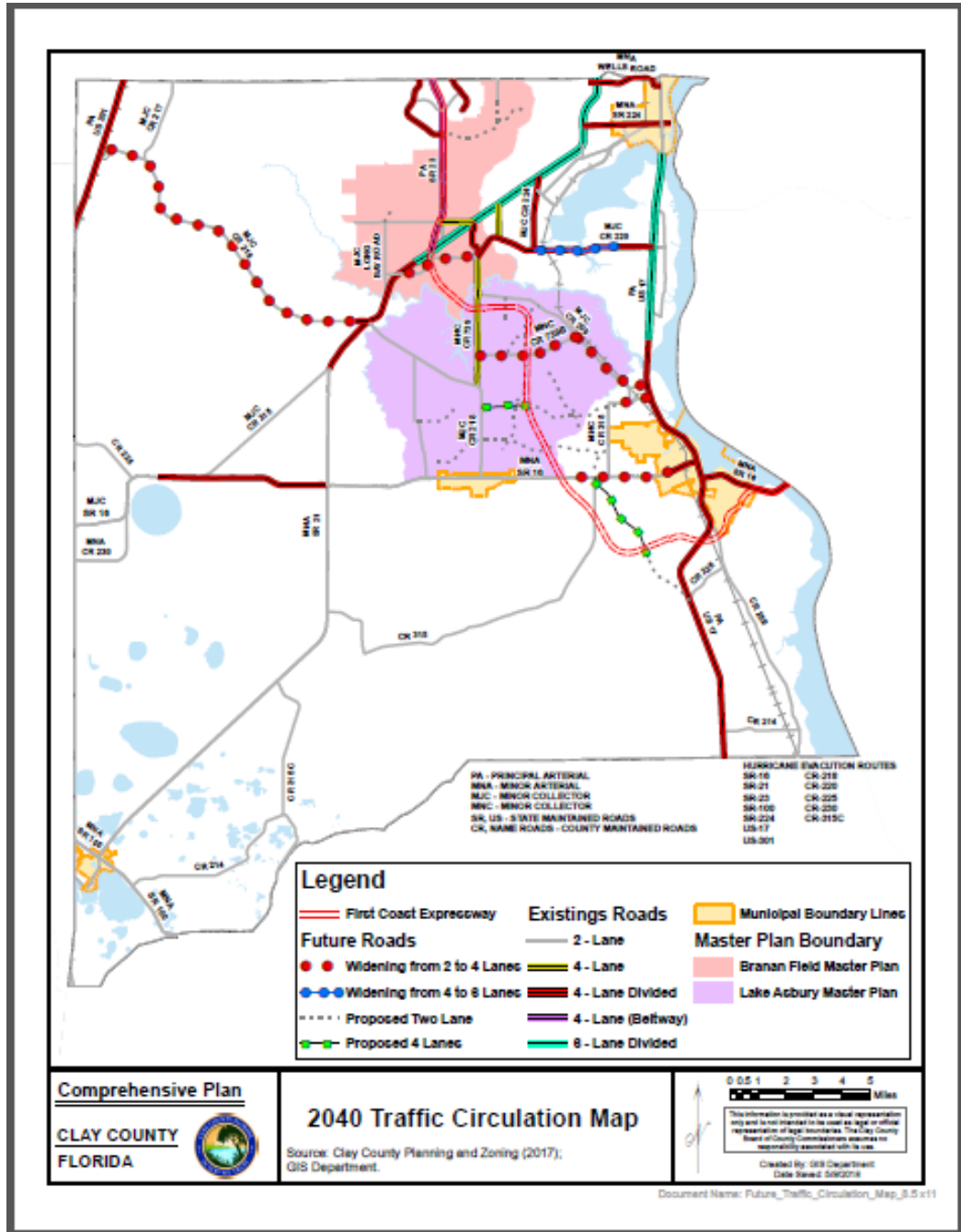
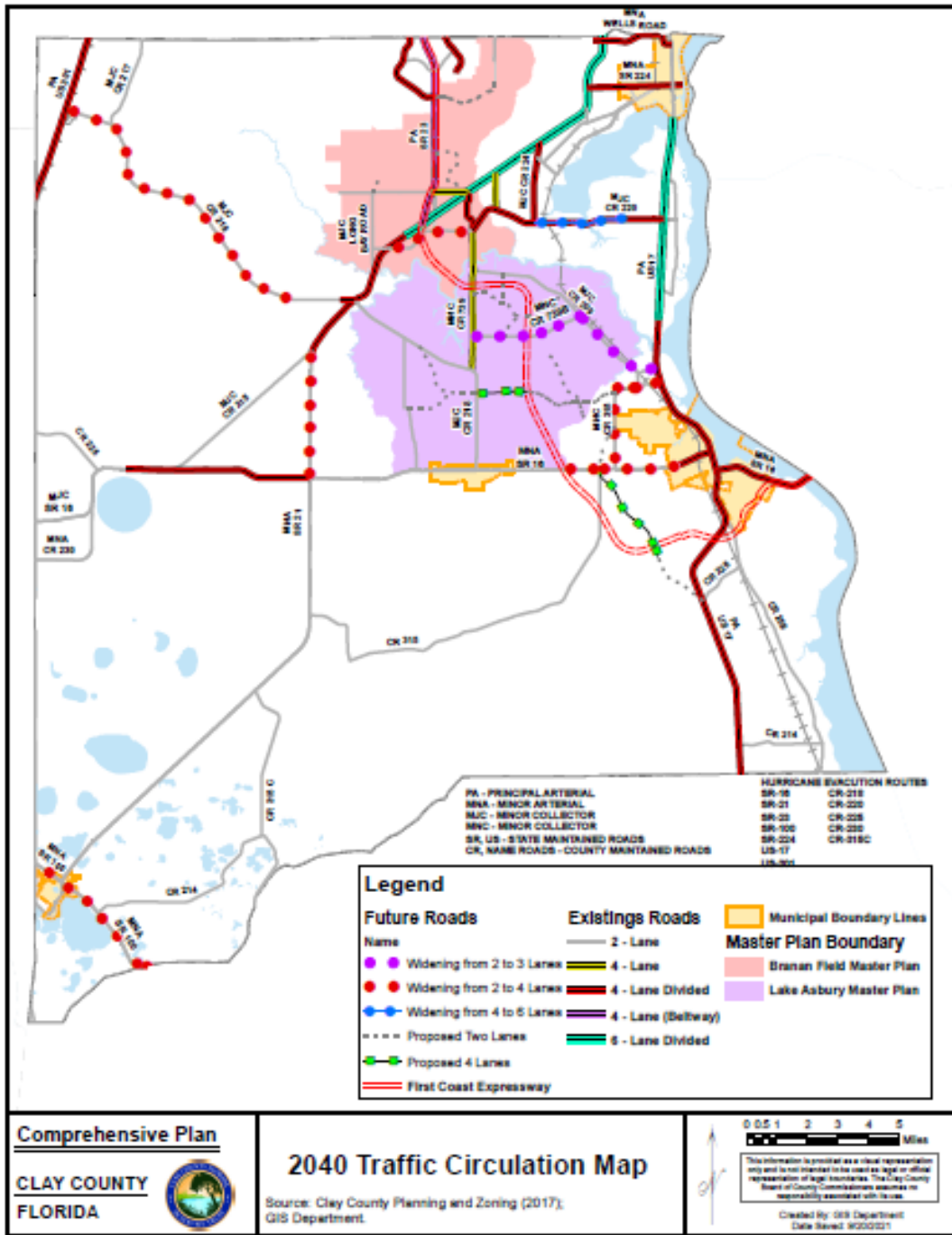


Figure 2



**RECOMMENDATION:**

Staff recommends that Figure 1 of the Transportation Element be amended as shown above in order to incorporate the three improvements from the Mobility Plan.