

Anabelle Island Phase 2B

A REPLAT OF TRACT 8 TROUGH 16, AS SHOWN ON THE PLAT OF ANABELLE ISLAND PHASE 2A, AS RECORDED IN PLAT BOOK 74, PAGES 63 THROUGH 73, INCLUSIVE, OF THE PUBLIC RECORDS OF CLAY COUNTY, FLORIDA, ALL LYING IN A PORTION OF THE MOSES E. LEVY GRANT, SECTIONS 39, AND THE F.M. ARRENDONDO JR. HEIRS GRANT, SECTION 40, ALL IN TOWNSHIP 5 SOUTH, RANGE 25 EAST, CLAY COUNTY, FLORIDA

CAPTION

TRACT 8 TROUGH 16, AS SHOWN ON THE PLAT OF ANABELLE ISLAND PHASE 2A, AS RECORDED IN PLAT BOOK 74, PAGES 63 THROUGH 73, INCLUSIVE, OF THE PUBLIC RECORDS OF CLAY COUNTY, FLORIDA, ALL LYING IN A PORTION OF THE MOSES E. LEVY GRANT, SECTIONS 39, AND THE F.M. ARRENDONDO JR. HEIRS GRANT, SECTION 40, ALL IN TOWNSHIP 5 SOUTH, RANGE 25 EAST, CLAY COUNTY, FLORIDA.

CONTAINING 13.14 ACRES, MORE OR LESS.

ADOPTION AND DEDICATION

THIS IS TO CERTIFY THAT KB HOME JACKSONVILLE LLC, A DELAWARE LIMITED LIABILITY COMPANY, HEREINAFTER "DEDICATOR", IS THE LAWFUL OWNER OF THE LANDS DESCRIBED IN THE CAPTION HEREON KNOWN AS ANABELLE ISLAND PHASE 2B, HAVING CAUSED THE SAME TO BE SURVEYED AND SUBDIVIDED. THIS PLAT BEING MADE IN ACCORDANCE WITH SAID SURVEY IS HEREBY ADOPTED AS A TRUE AND CORRECT PLAT OF THOSE LANDS.

ALL UNOBSTRUCTED DRAINAGE EASEMENTS AS SHOWN HEREON ARE HEREBY IRREVOCABLY AND WITHOUT RESERVATION DEDICATED TO THE ANABELLE ISLAND COMMUNITY DEVELOPMENT DISTRICT, A LOCAL UNIT OF SPECIAL PURPOSE GOVERNMENT ESTABLISHED PURSUANT TO CHAPTER 190, FLORIDA STATUTES ("CDD"), ITS SUCCESSORS AND ASSIGNS, ON A NON-EXCLUSIVE BASIS, FOR PURPOSES OF ACCESS, INGRESS AND EGRESS, DRAINAGE AND STORMWATER MANAGEMENT PURPOSES AS NECESSARY OR BENEFICIAL TO CURRENT OR FUTURE OWNERS OF LANDS SHOWN ON THIS PLAT AND OTHER LANDS WITHIN THE ANABELLE ISLAND SUBDIVISION. THE CDD SHALL HAVE THE OBLIGATION FOR MAINTENANCE AND OPERATION OF SAID TRACTS; PROVIDED, HOWEVER, THAT THE CDD RESERVES THE RIGHT TO ASSIGN THE OBLIGATION FOR SUCH MAINTENANCE AND OPERATION TO SUCH OTHER PROPERTY OWNERS ASSOCIATION OR ENTITY AS WILL ASSUME THE OBLIGATION FOR SUCH MAINTENANCE AND OPERATION UNDER THE PLAT. SAID UNOBSTRUCTED DRAINAGE EASEMENTS ARE SUBJECT TO THE FOLLOWING COVENANTS WHICH SHALL RUN WITH THE LAND.

THE DRAINAGE EASEMENTS HEREBY DEDICATED SHALL PERMIT THE CDD, ITS SUCCESSORS AND ASSIGNS, TO DISCHARGE INTO SAID LAKES AND FILTRATION SYSTEMS WHICH THESE EASEMENTS TRAVERSE, ALL WATER WHICH MAY FALL OR COME UPON ALL TRAILS, COURTS, LANES AND STREETS HEREBY DEDICATED, TOGETHER WITH ALL SOIL, NUTRIENTS, CHEMICALS AND ALL OTHER SUBSTANCES WHICH MAY FLOW OR PASS FROM SAID TRAILS, COURTS, LANES AND STREETS, FROM ADJACENT LAND OR FROM ANY OTHER SOURCE OF PUBLIC WATERS INTO OR THROUGH SAID LAKES AND FILTRATION SYSTEMS, WITHOUT ANY LIABILITY WHATSOEVER ON THE PART OF CLAY COUNTY, ITS SUCCESSORS AND ASSIGNS FOR ANY DAMAGE, INJURIES, OR LOSSES TO PERSONS OR PROPERTY RESULTING FROM THE ACCEPTANCE OR USE OF THESE DRAINAGE EASEMENTS BY THE CDD, ITS SUCCESSORS AND ASSIGNS.

ALL EASEMENTS, FOR THE WATER AND SEWER SYSTEMS, MARKED CCUA AND SHOWN ON PLAT, ARE HEREBY IRREVOCABLY AND WITHOUT RESERVATION DEDICATED TO CLAY COUNTY UTILITY AUTHORITY (CCUA), ITS SUCCESSORS AND ASSIGNS.

ALL EASEMENTS FOR THE UNDERGROUND ELECTRICAL DISTRIBUTION SYSTEM, MARKED CEC AND SHOWN ON PLAT, ARE HEREBY IRREVOCABLY AND WITHOUT RESERVATION DEDICATED TO CLAY ELECTRIC COOPERATIVE, INC. (CEC). DEDICATOR HEREBY IRREVOCABLY AND WITHOUT RESERVATION DEDICATES TO CEC, ITS SUCCESSORS AND ASSIGNS, A NON-EXCLUSIVE EASEMENT OVER, UPON AND UNDER THE ROAD RIGHTS-OF-WAY DESIGNATED ON THIS PLAT, FOR ITS NON-EXCLUSIVE USE IN CONJUNCTION WITH THE INSTALLATION, MAINTENANCE, AND USE OF CEC UTILITIES, TOGETHER WITH THE RIGHT OF CEC, ITS SUCCESSORS AND ASSIGNS, OF INGRESS AND EGRESS TO AND OVER SAID ROAD RIGHTS-OF-WAY DESIGNATED ON THIS PLAT.

DEDICATOR HEREBY IRREVOCABLY AND WITHOUT RESERVATION DEDICATES TO CCUA, ITS SUCCESSORS AND ASSIGNS, A NON-EXCLUSIVE EASEMENT OVER, UPON AND UNDER THE ROAD RIGHTS-OF-WAY DESIGNATED ON THIS PLAT AND ALL FUTURE RIGHT OF WAY TRACTS, FOR ITS NON-EXCLUSIVE USE IN CONJUNCTION WITH THE INSTALLATION, MAINTENANCE, AND USE OF CCUA UTILITIES, TOGETHER WITH THE RIGHT OF CCUA, ITS SUCCESSORS AND ASSIGNS, OF INGRESS AND EGRESS TO AND OVER SAID ROAD RIGHTS-OF-WAY DESIGNATED ON THIS PLAT.

DEDICATOR HEREBY IRREVOCABLY AND WITHOUT RESERVATION DEDICATES TO CEC, ITS SUCCESSORS AND ASSIGNS, A NON-EXCLUSIVE EASEMENT OVER, UPON AND UNDER THE ROAD RIGHTS-OF-WAY DESIGNATED ON THIS PLAT AND ALL FUTURE RIGHT OF WAY TRACTS, FOR ITS NON-EXCLUSIVE USE IN CONJUNCTION WITH THE INSTALLATION, MAINTENANCE, AND USE OF CEC UTILITIES TOGETHER WITH THE RIGHT OF CEC ITS SUCCESSORS AND ASSIGNS, OF INGRESS AND EGRESS TO AND OVER SAID ROAD RIGHTS-OF-WAY DESIGNATED ON THIS PLAT.

THE EASEMENTS DESCRIBED IN GENERAL NOTES 10 THROUGH 13 HEREIN, SHALL BE IRREVOCABLY DEDICATED AS STATED THEREIN.

THE AT&T EASEMENT AND AT&T ACCESS EASEMENT SHOWN HEREON IS HEREBY IRREVOCABLY DEDICATED TO BELLSOUTH TELECOMMUNICATIONS, LLC, A GEORGIA LIMITED LIABILITY COMPANY DOING BUSINESS AS AT&T FLORIDA, ITS SUCCESSORS AND ASSIGNS.

THE ROADS, STREETS, DRAINAGE, OR OTHER COMMON FACILITIES OF THIS SUBDIVISION ARE/IS NOT INTENDED FOR PUBLIC USE AND THE BOARD OF COUNTY COMMISSIONERS EXPRESSLY REJECTS ANY ROAD, STREET, OR OTHER COMMON FACILITY FOR MAINTENANCE BY CLAY COUNTY.

NONE OF THE FOREGOING SHALL PROHIBIT CLAY COUNTY, FROM ESTABLISHING A MUNICIPAL SERVICE TAXING UNIT, MUNICIPAL SERVICE BENEFIT UNIT, STORMWATER UTILITY, TRANSPORTATION UTILITY, OR ANY OTHER SPECIAL ASSESSMENT/FEE SYSTEM WITHIN ANY SUBDIVISION FOR THE FURNISHING OF ROADS, STREETS, DRAINAGE, OR OTHER BENEFITS. NOR SHALL ANY OF THE FOREGOING PROHIBIT THE ACCEPTANCE FOR MAINTENANCE OF ROADS OR COMMON FACILITIES BY THE COUNTY COMMISSION IF AFTER ANY FILING OF ANY PLAT THE FACILITIES TO BE ACCEPTED BY THE BOARD FOR MAINTENANCE ARE UPGRADED TO COUNTY ACCEPTANCE STANDARDS BY CONTRIBUTION OF THE LOCAL DEVELOPER OR HOMEOWNERS OR BY ESTABLISHMENT OF A MUNICIPAL SERVICE BENEFIT DISTRICT.

UPON FAILURE OF THE COMMUNITY DEVELOPMENT DISTRICT, HOMEOWNERS' ASSOCIATION, OR ANY OTHER SUCH ENTITY THAT HAS ASSUMED THE OBLIGATION OF MAINTENANCE PERTAINING TO ANY STORMWATER MANAGEMENT FACILITIES, DRAINAGE EASEMENTS, ROADS, STREETS, RIGHTS-OF-WAY, TRACTS, OR ANY OTHER PORTION OF A PARCEL AS SHOWN HEREON THE PLAT, THE OBLIGATION WOULD THEN EQUALLY FALL ON THE LOT OWNERS AS SHOWN HEREON THE PLAT.

IN WITNESS WHEREOF, KB HOME JACKSONVILLE LLC, A DELAWARE LIMITED LIABILITY COMPANY HAS CAUSED THESE PRESENTS TO BE EXECUTED ON ITS BEHALF.

KB HOME JACKSONVILLE LLC.

A DELAWARE LIMITED LIABILITY COMPANY

By: _____ Witness: _____
Print Name: _____ Print Name: _____
Title: _____ Witness: _____
KB HOME JACKSONVILLE LLC,
A DELAWARE LIMITED LIABILITY COMPANY Print Name: _____

NOTARY FOR KB HOME JACKSONVILLE LLC.

A DELAWARE LIMITED LIABILITY COMPANY

STATE: _____
COUNTY: _____

THE FOREGOING INSTRUMENT WAS ACKNOWLEDGED BEFORE ME BY MEANS OF [] PHYSICAL PRESENCE OR [] ONLINE NOTARIZATION, THIS ____ DAY OF _____, 2024, A.D., BY _____ AS _____ OF KB HOME JACKSONVILLE LLC, A DELAWARE LIMITED LIABILITY COMPANY, ON BEHALF OF THE COMPANY, [] WHO IS PERSONALLY KNOWN TO ME OR [] WHO HAS PRODUCED A _____ AS IDENTIFICATION.

NOTARY PUBLIC, STATE OF FLORIDA
TYPE OR PRINT NAME: _____
COMMISSION # _____
MY COMMISSION EXPIRES _____

SUBDIVISION IMPROVEMENT GUARANTEE:

AS A CONDITION PRECEDENT TO THE RECORDATION OF THIS PLAT IN THE PUBLIC RECORDS OF CLAY COUNTY, FLORIDA, ANABELLE ISLAND COMMUNITY DEVELOPMENT DISTRICT (THE "DISTRICT") DOES HEREBY GUARANTEE TO EACH AND EVERY PERSON, FIRM, COPARTNERSHIP OR CORPORATION, THEIR HEIRS, SUCCESSORS AND ASSIGNS, WHO SHALL PURCHASE A LOT OR LOTS IN SAID SUBDIVISION FROM SAID DEDICATOR(S), THAT SAID DEDICATOR(S) SHALL WITHIN 24 MONTHS OF THE DATE OF ACCEPTANCE OF THE STREET AND DRAINAGE IMPROVEMENTS BY ANABELLE ISLAND COMMUNITY DEVELOPMENT DISTRICT FULLY COMPLY WITH EACH AND EVERY REGULATION OF THE BOARD OF COUNTY COMMISSIONERS OF CLAY COUNTY, FLORIDA, COVERING SUBDIVISIONS IN EFFECT AT THE TIME OF THE FILING OF THIS FINAL PLAT INSOFAR AS THE SAME EFFECTS A LOT OR LOTS SOLD.

ANABELLE ISLAND COMMUNITY DEVELOPMENT DISTRICT

ANABELLE ISLAND COMMUNITY DEVELOPMENT DISTRICT, A LOCAL UNIT OF SPECIAL PURPOSE GOVERNMENT ESTABLISHED PURSUANT TO CHAPTER 190, FLORIDA STATUTES

By: _____ Witness: _____
Print Name: _____ Print Name: _____
Title: _____ Witness: _____
Print Name: _____

NOTARY FOR ANABELLE ISLAND COMMUNITY DEVELOPMENT DISTRICT

STATE: _____
COUNTY: _____

THE FOREGOING INSTRUMENT WAS ACKNOWLEDGED BEFORE ME BY MEANS OF [] PHYSICAL PRESENCE OR [] ONLINE NOTARIZATION, THIS ____ DAY OF _____, 2024, A.D., BY _____ AS _____ OF ANABELLE ISLAND COMMUNITY DEVELOPMENT DISTRICT, A LOCAL UNIT OF SPECIAL PURPOSE GOVERNMENT ESTABLISHED PURSUANT TO CHAPTER 190, FLORIDA STATUTES, ON BEHALF OF THE DISTRICT, [] WHO IS PERSONALLY KNOWN TO ME OR [] WHO HAS PRODUCED A _____ AS IDENTIFICATION.

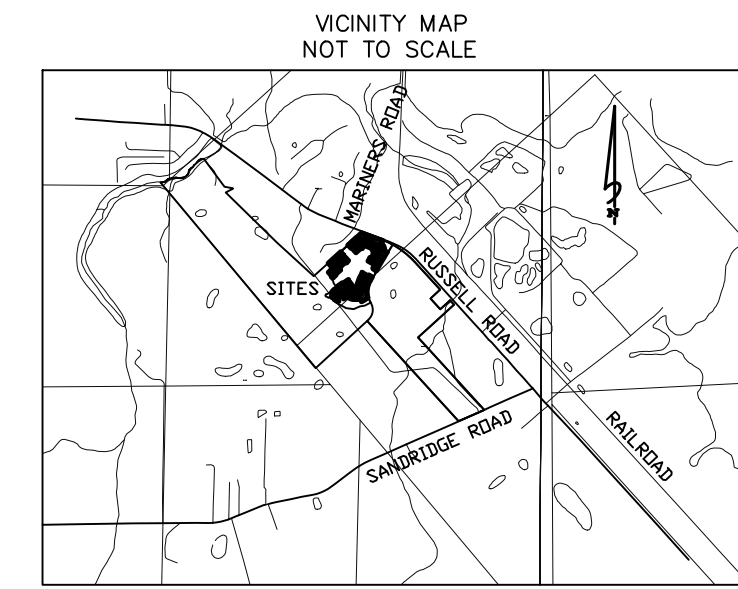
NOTARY PUBLIC, STATE OF FLORIDA
PRINT NAME: _____
COMMISSION # _____
MY COMMISSION EXPIRES _____

SURVEYOR'S CERTIFICATE

KNOW ALL YE MEN BY THESE PRESENTS, THAT THE UNDERSIGNED, BEING CURRENTLY LICENSED AND REGISTERED BY THE STATE OF FLORIDA AS A PROFESSIONAL SURVEYOR AND MAPPER, DOES HEREBY CERTIFY THAT THE ABOVE PLAT IS A TRUE AND CORRECT REPRESENTATION OF THE LANDS SURVEYED, PLATTED AND DESCRIBED, AND WAS MADE UNDER THE UNDERSIGNED'S RESPONSIBLE DIRECTION AND SUPERVISION, AND THAT THE PLAT COMPLIES WITH ALL OF THE SURVEY REQUIREMENTS OF PART 1, CHAPTER 177 FLORIDA STATUTES.

SIGNED AND SEALED THIS ____ DAY OF _____, 2024 A.D.

MICHAEL J. COLLIGAN
FLORIDA REGISTERED LAND SURVEYOR NO. 6788
CLARY AND ASSOCIATES
L.B. NO. 3731
3830 CROWN POINT ROAD
JACKSONVILLE, FLORIDA 32257



COUNTY COMMISSIONERS' APPROVAL

EXAMINED AND APPROVED THIS ____ DAY OF _____, A.D. 2024, BY THE BOARD OF COUNTY COMMISSIONERS OF CLAY COUNTY, FLORIDA.

JIM RENNINGER, CHAIRMAN

TARA S. GREEN, CLERK OF COURT AND COMPTROLLER, EX OFFICIO CLERK TO THE BOARD

CERTIFICATE OF CLERK

I HEREBY CERTIFY THAT THIS PLAT HAS BEEN RECORDED IN PLAT BOOK _____, PAGES _____ OF THE PUBLIC RECORDS OF CLAY COUNTY, FLORIDA ON THIS ____ DAY OF _____, A.D. 2024.

TARA S. GREEN, CLERK OF COURT AND COMPTROLLER, EX OFFICIO CLERK TO THE BOARD

COUNTY ENGINEER APPROVAL

EXAMINED AND APPROVED THIS ____ DAY OF _____, A.D. 2024.

DIRECTOR OF ENGINEERING

DEPARTMENT OF ECONOMIC AND DEVELOPMENT SERVICES APPROVAL

EXAMINED AND APPROVED THIS ____ DAY OF _____, A.D. 2024.

DIRECTOR OF ECONOMIC AND DEVELOPMENT SERVICES

CERTIFICATE OF REVIEW BY SURVEYOR/MAPPER

THE UNDERSIGNED SURVEYOR HEREBY CERTIFIES THAT THEY HAVE REVIEWED THIS PLAT ON BEHALF OF CLAY COUNTY, FLORIDA, IN ACCORDANCE WITH THE REQUIREMENTS OF CHAPTER 177.081(1), FLORIDA STATUTES, AND HAS DETERMINED THAT SAID PLAT CONFORMS WITH THE REQUIREMENTS OF CHAPTER 177, FLORIDA STATUTES. THE UNDERSIGNED DID NOT PREPARE THIS PLAT. THIS CERTIFICATE IS MADE AS OF THE ____ DAY OF _____, 2024.

RICK LEE MECKLENBURG
FLORIDA REGISTRATION LAND SURVEYOR NO. 5920
3830 CROWN POINT ROAD
JACKSONVILLE, FLORIDA 32257



Anabelle Island Phase 2B

PLAT BOOK PAGE

A REPLAT OF TRACT 8 THROUGH 16, AS SHOWN ON THE PLAT OF ANABELLE ISLAND PHASE 2A, AS RECORDED IN PLAT BOOK 74, PAGES 63 THROUGH 73, INCLUSIVE, OF THE PUBLIC RECORDS OF CLAY COUNTY, FLORIDA, ALL LYING IN A PORTION OF THE MOSES E. LEVY GRANT, SECTIONS 39, AND THE F.M. ARRENDONDO JR. HEIRS GRANT, SECTION 40, ALL IN TOWNSHIP 5 SOUTH, RANGE 25 EAST, CLAY COUNTY, FLORIDA

SHEET 2 OF 8 SHEETS
108 LOTS AND 0 TRACT, THIS PHASE

General Notes

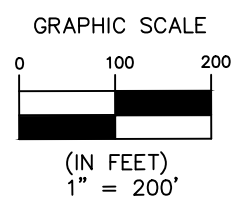
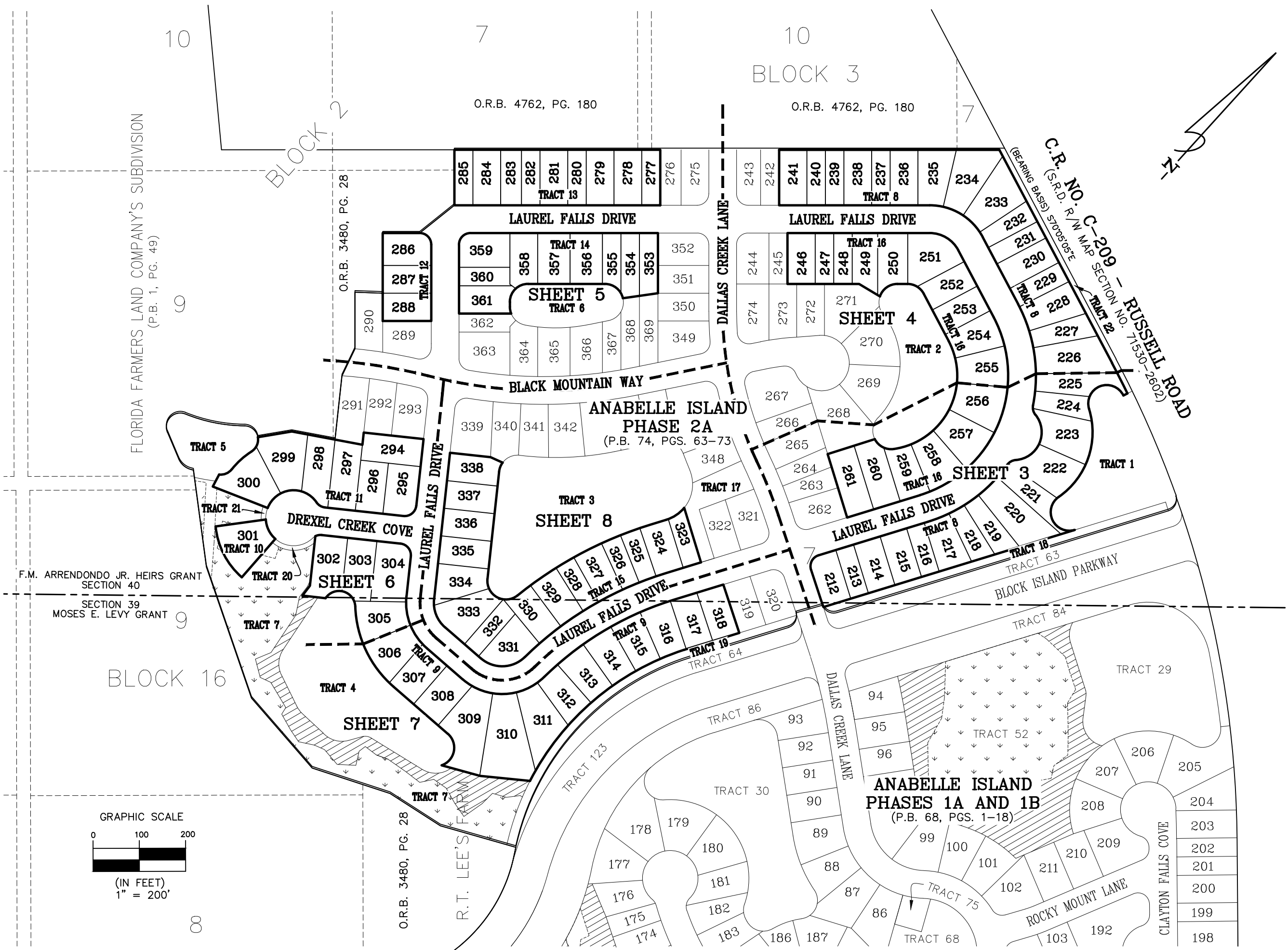
- BEARINGS SHOWN HEREON ARE BASED ON THE SW'LY R/W LINE OF C.R. NO. C-209 - RUSSELL ROAD AS 570°05'05"E PER STATE PLANE COORDINATE SYSTEM, FLORIDA EAST ZONE, NORTH AMERICAN DATUM 1983(2011).
- N 2080588.350
E 417472.651 DENOTES COORDINATES REFERENCED DATUM FLORIDA EAST ZONE NAD 1983(2011). (US FEET)

POINT	NORTHING	EASTING	DESCRIPTION
1	2084791.61	414005.57	MOST S'LY CORNER OF LOT 241
2	2084880.54	413924.91	MOST W'LY CORNER OF LOT 241
3	2084759.28	414059.24	MOST W'LY CORNER OF LOT 246
4	2084677.80	414133.14	MOST S'LY CORNER OF LOT 246
5	2084618.98	413815.23	MOST E'LY CORNER OF LOT 277
6	2084408.96	413404.95	MOST W'LY CORNER OF LOT 285
7	2084101.25	413616.53	MOST E'LY CORNER OF LOT 288
8	2084171.45	413411.11	MOST W'LY CORNER OF LOT 286
9	2084571.18	413851.84	MOST N'LY CORNER OF LOT 353
10	2084474.88	413939.17	MOST E'LY CORNER OF LOT 353
11	2083824.60	413670.45	MOST W'LY CORNER OF LOT 294
12	2083901.05	413775.59	MOST N'LY CORNER OF LOT 294
13	2083525.84	413683.22	MOST NE'LY CORNER OF LOT 301
14	2083415.70	413685.21	MOST SE'LY CORNER OF LOT 301
15	2084103.44	414466.87	MOST N'LY CORNER OF LOT 318
16	2084049.20	414562.65	MOST E'LY CORNER OF LOT 318
17	2084169.36	414292.87	MOST NW'LY CORNER OF LOT 323
18	2083978.08	413936.51	MOST NE'LY CORNER OF LOT 338

- NOTICE: THIS PLAT, AS RECORDED IN ITS GRAPHIC FORM, IS THE OFFICIAL DEPICTION OF THE SUBDIVIDED LANDS DESCRIBED HEREIN AND WILL IN NO CIRCUMSTANCES BE SUPPLANTED IN AUTHORITY BY ANY OTHER GRAPHIC OR DIGITAL FORM OF THE PLAT. THERE MAY BE RESTRICTIONS THAT ARE NOT RECORDED ON THIS PLAT THAT MAY BE FOUND IN THE PUBLIC RECORDS OF THIS COUNTY. (FLORIDA STATUTE 177.091)
- THE LANDS SHOWN HEREON LIE WITHIN FLOOD ZONE "X" AND "A" AS SHOWN ON FLOOD INSURANCE RATE MAP 12019C, PANELS NO. 0160E AND 0170E, COMMUNITY NO. 120064, DATED MARCH 17, 2014. HOWEVER, THE FLOOD INSURANCE RATE MAPS ARE SUBJECT TO CHANGE.
- BEARINGS AND DISTANCES SHOWN ON CURVES REFER TO CHORD BEARINGS AND DISTANCES.
- THE TABULATED CURVE & LINE TABLE(S) SHOWN ON EACH SHEET ARE APPLICABLE ONLY TO THE CURVES & LINES THAT APPEAR ON THAT SHEET.
- BUILDING RESTRICTION LINES ARE AS FOLLOWS:
MINIMUM FRONT SETBACK - 5' FOR FRONT PORCHES, 10' FOR FRONT FACADE,
20' FOR FRONT FACING GARAGES
MINIMUM REAR SETBACK - 10', 14' WITH REAR ALLEYS
MINIMUM SIDE SETBACK - 5'
- ALL PLATTED UTILITY EASEMENTS SHALL ALSO BE EASEMENTS FOR THE CONSTRUCTION, INSTALLATION, MAINTENANCE, AND OPERATION OF CABLE TELEVISION SERVICES; PROVIDED HOWEVER, NO SUCH CONSTRUCTION, INSTALLATION, MAINTENANCE, AND OPERATION OF CABLE TELEVISION SERVICES SHALL INTERFERE WITH THE FACILITIES AND SERVICES OF AN ELECTRIC, TELEPHONE, GAS, OR OTHER PUBLIC UTILITY. IN THE EVENT A CABLE TELEVISION COMPANY DAMAGES THE FACILITIES OF A PUBLIC UTILITY, IT SHALL BE SOLELY RESPONSIBLE FOR THE DAMAGES.
- ALL EASEMENTS FOR THE UNDERGROUND TELECOMMUNICATION DISTRIBUTION SYSTEM MARKED SBT AND SHOWN ON PLAT ARE HEREBY IRREVOCABLY AND WITHOUT RESERVATION DEDICATED TO BELLSOUTH TELECOMMUNICATIONS, INC., A GEORGIA CORPORATION, ITS SUCCESSORS AND ASSIGNS, AND ALLIED AND ASSOCIATED COMPANIES.
- ALL EASEMENTS FOR THE WATER AND SEWER SYSTEMS MARKED CCUA AND SHOWN ON PLAT ARE HEREBY IRREVOCABLY AND WITHOUT RESERVATION DEDICATED TO CLAY COUNTY UTILITY AUTHORITY (CCUA), ITS SUCCESSORS AND ASSIGNS.
- WHERE A CLAY COUNTY UTILITY AUTHORITY EASEMENT CROSSES AN EASEMENT OR RIGHT-OF-WAY GRANTED TO CLAY ELECTRIC COOPERATIVE, INC., CLAY COUNTY UTILITY AUTHORITY SHALL HAVE THE RIGHT TO LOCATE ITS FACILITIES IN SAID JOINT USE EASEMENT AREA, BUT SUCH USE SHALL BE NON-EXCLUSIVE. CLAY ELECTRIC COOPERATIVE, INC. SHALL USE, OCCUPY, AND LOCATE FACILITIES IN THESE JOINT USE AREAS SO AS TO REASONABLY ACCOMMODATE CLAY COUNTY UTILITY AUTHORITY'S FACILITIES.
- ALL EASEMENTS FOR THE UNDERGROUND ELECTRICAL DISTRIBUTION SYSTEM MARKED CEC AND SHOWN ON PLAT ARE HEREBY IRREVOCABLY AND WITHOUT RESERVATION DEDICATED TO CLAY ELECTRIC COOPERATIVE, INC. (CEC)
- WHERE A CLAY ELECTRIC COOPERATIVE, INC. EASEMENT CROSSES AN EASEMENT OR RIGHT-OF-WAY GRANTED TO CLAY COUNTY UTILITY AUTHORITY, CLAY ELECTRIC COOPERATIVE, INC. SHALL HAVE THE RIGHT TO LOCATE ITS FACILITIES IN SAID JOINT USE EASEMENT AREA, BUT SUCH USE SHALL BE NON-EXCLUSIVE. CLAY COUNTY UTILITY AUTHORITY SHALL USE, OCCUPY, AND LOCATE FACILITIES IN THESE JOINT USE AREAS SO AS TO REASONABLY ACCOMMODATE CLAY ELECTRIC COOPERATIVE, INC.'S FACILITIES.
- WHETHER DEPICTED ON THE PLAT OR NOT, THE DEDICATOR/OWNER HEREBY GRANTS CLAY ELECTRIC COOPERATIVE, INC., AND CLAY COUNTY UTILITY AUTHORITY, A TEN FOOT (10') WIDE PERPETUAL EASEMENT FOR UTILITY SERVICES OVER, UNDER, UPON AND ACROSS ALL LANDS LYING ADJACENT TO, PARALLEL WITH, AND OUTSIDE OF THE AREAS SHOWN ON THE PLAT AS ROADS, STREETS, OR OTHER RIGHTS-OF-WAY.
- ALL WETLAND-UPLAND BUFFER AREAS SHOWN HEREON ARE WHOLLY CONTAINED WITHIN THE TRACTS AS SHOWN ON SAID PLAT, AND THE CONTROL AND OWNERSHIP ARE RETAINED BY THE DEVELOPER AS SHOWN HEREON.

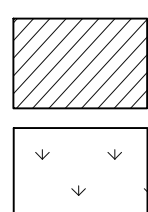
- THE LANDS SHOWN HEREON ARE SUBJECT TO THE FOLLOWING EASEMENTS:
O.R.B. 4394, PG. 429 NON-EXCLUSIVE RECIPROCAL STEP-IN EASEMENT
O.R.B. 4394, PG. 444 NON-EXCLUSIVE ACCESS & UTILITIES EASEMENT
O.R.B. 4754, PG. 33 FIRST AMENDMENT NON-EXCLUSIVE ACCESS & UTILITIES EASEMENT
O.R.B. 4489, PG. 526 DECLARATION OF COVENANTS, CONDITIONS & RESTRICTIONS
O.R.B. 4521, PG. 656 FIRST AMENDMENT
O.R.B. 4609, PG. 406 AMENDED & RESTATED
O.R.B. 4720, PG. 1424 AMENDED & RESTATED FIRST AMENDMENT
O.R.B. 4578, PG. 160 DEED OF CONSERVATION EASEMENT
O.R.B. 4598, PG. 598 GRANT OF EASEMENT (COMCAST CABLE)

- BLANKETS PLATTED LANDS AFFECTS SITE (NON PLOTTABLE)
AFFECTS SITE (NON PLOTTABLE)
BLANKETS PLATTED LANDS AFFECTS SITE (NON PLOTTABLE)
BLANKETS PLATTED LANDS AFFECTS SITE (NON PLOTTABLE)
BLANKETS PLATTED LANDS AFFECTS SITE (NON PLOTTABLE)
BLANKETS PLATTED LANDS AFFECTS SITE (NON PLOTTABLE)



LEGEND

- O.R.B. = OFFICIAL RECORDS BOOK
P.B. = PLAT BOOK
PG(S). = PAGES
NO. = NUMBER
S.R.D. = STATE ROAD DEPARTMENT
R/W = RIGHT OF WAY
(R) = LOT LINE RADIAL TO R/W
C = CENTERLINE
PC = POINT OF CURVATURE
PT = POINT OF TANGENCY
NT = POINT OF NON-TANGENCY
PCC = POINT OF COMPOUND CURVATURE
PRC = POINT OF REVERSE CURVATURE
JWL = JURISDICTIONAL WETLANDS LINE
UDE = UNOBSTRUCTED DRAINAGE EASEMENT
CEC = CLAY ELECTRIC COOPERATIVE
CCUA = CLAY COUNTY UTILITY AUTHORITY
P.R.M. = PERMANENT REFERENCE MONUMENT
ATB = APPROXIMATE TOP OF BANK
- = FOUND 4"x4" CONCRETE MONUMENT STAMPED P.R.M. LB 3731
● = SET 5/8" REBAR WITH CAP "P.R.M. LB 3731"
○ = FOUND 5/8" REBAR WITH CAP "P.R.M. LB 3731"



- DENOTES UPLAND BUFFER
DENOTES WETLANDS

LAND USE: LA MPC
ZONING: LA MPC
AREA: 13.14 ± ACRES
NUMBER OF LOTS: 108
NUMBER OF TRACTS: 0
MINIMUM LOT SIZE 60'x110'
MAXIMUM PERCENT OF LOT COVERAGE:
50 PERCENT (TOTAL FOR ALL PRIMARY AND ACCESSORY BUILDINGS);
70 PERCENT WITH REAR ALLEYS

OWNER: KB HOME JACKSONVILLE LLC,
ADDRESS: 10475 FORTUNE PARKWAY
JACKSONVILLE, FLORIDA, 32257

ENGINEER: NORTH FLORIDA ENGINEERING SERVICES, INC
ADDRESS: 263 RIVER HILLS DRIVE
JACKSONVILLE, FLORIDA, 32216

SURVEYOR: CLARY & ASSOCIATES, INC
ADDRESS: 3830 CROWN POINT ROAD
JACKSONVILLE, FLORIDA, 32257

ELECTRIC SERVICE PROVIDED BY: CLAY ELECTRIC COOPERATIVE, INC.

WATER AND SEWER SERVICE PROVIDED BY: CLAY COUNTY UTILITY AUTHORITY



Anabelle Island Phase 2B

A REPLAT OF TRACT 8 THROUGH 16, AS SHOWN ON THE PLAT OF ANABELLE ISLAND PHASE 2A, AS RECORDED IN PLAT BOOK 74, PAGES 63 THROUGH 73, INCLUSIVE, OF THE PUBLIC RECORDS OF CLAY COUNTY, FLORIDA, ALL LYING IN A PORTION OF THE MOSES E. LEVY GRANT, SECTIONS 39, AND THE F.M. ARRENDONDO JR. HEIRS GRANT, SECTION 40, ALL IN TOWNSHIP 5 SOUTH, RANGE 25 EAST, CLAY COUNTY, FLORIDA

PLAT BOOK PAGE

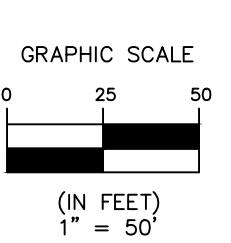
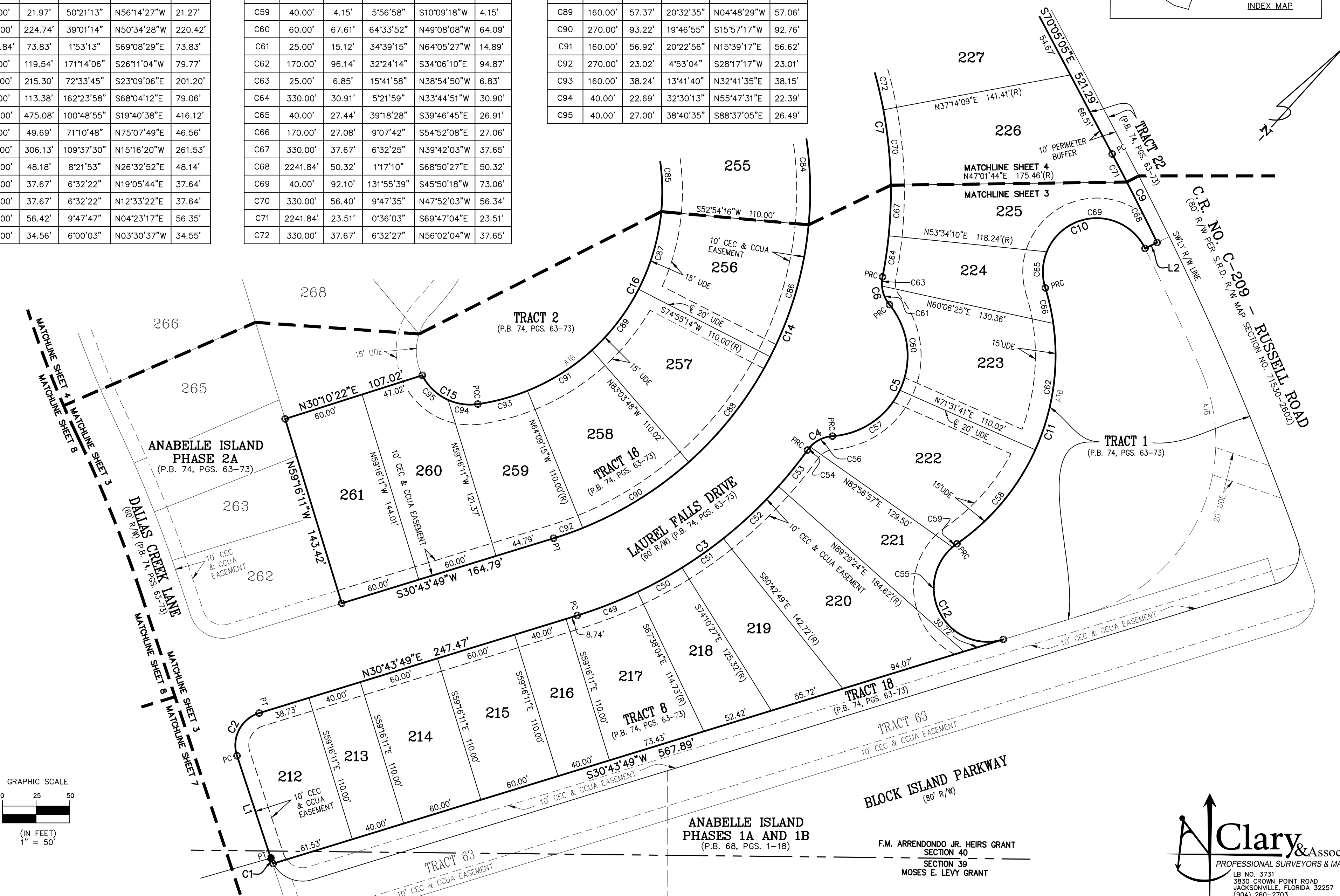
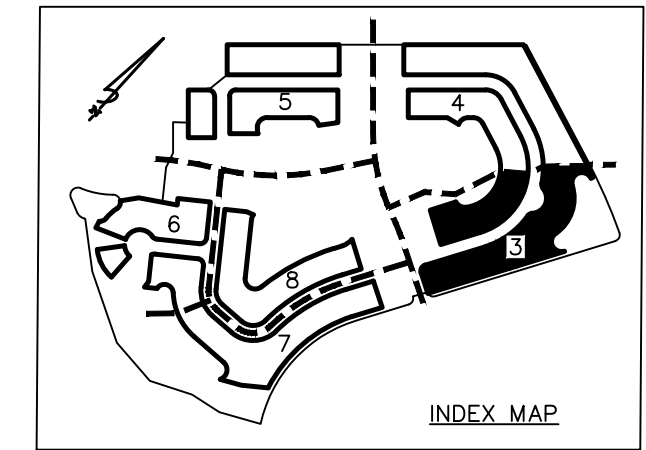
SHEET 3 OF 8 SHEETS
SEE SHEET 2 FOR GENERAL NOTES & LEGEND

CURVE TABLE					
CURVE	RADIUS	LENGTH	DELTA	BEARING	CHORD
C1	25.00'	4.51'	10°19'32"	N65°38'38"W	4.50'
C2	25.00'	39.80'	91°12'41"	N14°52'32"W	35.73'
C3	330.00'	214.49'	37°14'28"	N12°06'35"E	210.74'
C4	25.00'	21.97'	50°21'13"	N18°39'58"E	21.27'
C5	60.00'	131.17'	125°15'38"	N18°47'15"W	106.57'
C6	25.00'	21.97'	50°21'13"	N56°14'27"W	21.27'
C7	330.00'	224.74'	39°01'14"	N50°34'28"W	220.42'
C9	2241.84'	73.83'	1°53'13"	S69°08'29"E	73.83'
C10	40.00'	119.54'	171°14'06"	S26°11'04"W	79.77'
C11	170.00'	215.30'	72°33'45"	S23°09'06"E	201.20'
C12	40.00'	113.38'	162°23'58"	S68°04'12"E	79.06'
C14	270.00'	475.08'	100°48'55"	S19°40'38"E	416.12'
C15	40.00'	49.69'	71°10'48"	N75°07'49"E	46.56'
C16	160.00'	306.13'	109°37'30"	N15°16'20"W	261.53'
C49	330.00'	48.18'	8°21'53"	N26°32'52"E	48.14'
C50	330.00'	37.67'	6°32'22"	N19°05'44"E	37.64'
C51	330.00'	37.67'	6°32'22"	N12°33'22"E	37.64'
C52	330.00'	56.42'	9°47'47"	N04°23'17"E	56.35'
C53	330.00'	34.56'	6°00'03"	N03°30'37"W	34.55'

CURVE TABLE					
CURVE	RADIUS	LENGTH	DELTA	BEARING	CHORD
C54	25.00'	3.12'	7°09'05"	N02°56'06"W	3.12'
C55	40.00'	109.22'	156°27'00"	S71°02'41"E	78.32'
C56	25.00'	18.85'	43°12'07"	N22°14'30"E	18.41'
C57	60.00'	63.56'	60°41'45"	N13°29'41"E	60.63'
C58	170.00'	92.07'	31°01'49"	S02°23'08"E	90.95'
C59	40.00'	4.15'	5°56'58"	S10°09'18"W	4.15'
C60	60.00'	67.61'	64°33'52"	N49°08'08"W	64.09'
C61	25.00'	15.12'	34°39'15"	N64°05'27"W	14.89'
C62	170.00'	96.14'	32°24'14"	S34°06'10"E	94.87'
C63	25.00'	6.85'	15°41'58"	N38°54'50"W	6.83'
C64	330.00'	30.91'	5°21'59"	N33°44'51"W	30.90'
C65	40.00'	27.44'	39°18'28"	S39°46'45"E	26.91'
C66	170.00'	27.08'	9°07'42"	S54°52'08"E	27.06'
C67	330.00'	37.67'	6°32'25"	N39°42'03"W	37.65'
C68	2241.84'	50.32'	1°17'10"	S68°50'27"E	50.32'
C69	40.00'	92.10'	131°55'39"	S45°50'18"W	73.06'
C70	330.00'	56.40'	9°47'35"	N47°52'03"W	56.34'
C71	2241.84'	23.51'	0°36'03"	S69°47'04"E	23.51'
C72	330.00'	37.67'	6°32'27"	N56°02'04"W	37.65'

CURVE TABLE					
CURVE	RADIUS	LENGTH	DELTA	BEARING	CHORD
C84	270.00'	90.25'	19°09'09"	S46°27'35"E	89.83'
C85	160.00'	53.89'	19°17'54"	N46°23'12"W	53.64'
C86	270.00'	102.75'	21°48'14"	S25°58'53"E	102.13'
C87	160.00'	60.48'	21°39'29"	N25°54'31"W	60.12'
C88	270.00'	99.64'	21°08'36"	S04°30'28"E	99.07'
C89	160.00'	57.37'	20°32'35"	N04°48'29"W	57.06'
C90	270.00'	93.22'	19°46'55"	S15°57'17"W	92.76'
C91	160.00'	56.92'	20°22'56"	N15°39'17"E	56.62'
C92	270.00'	23.02'	4°53'04"	S28°17'17"W	23.01'
C93	160.00'	38.24'	13°41'40"	N32°41'35"E	38.15'
C94	40.00'	22.69'	32°30'13"	N55°47'31"E	22.39'
C95	40.00'	27.00'	38°40'35"	S88°37'05"E	26.49'

LINE TABLE		
LINE	BEARING	DISTANCE
L1	N60°28'52"W	80.02'
L2	S21°48'08"W	10.00'



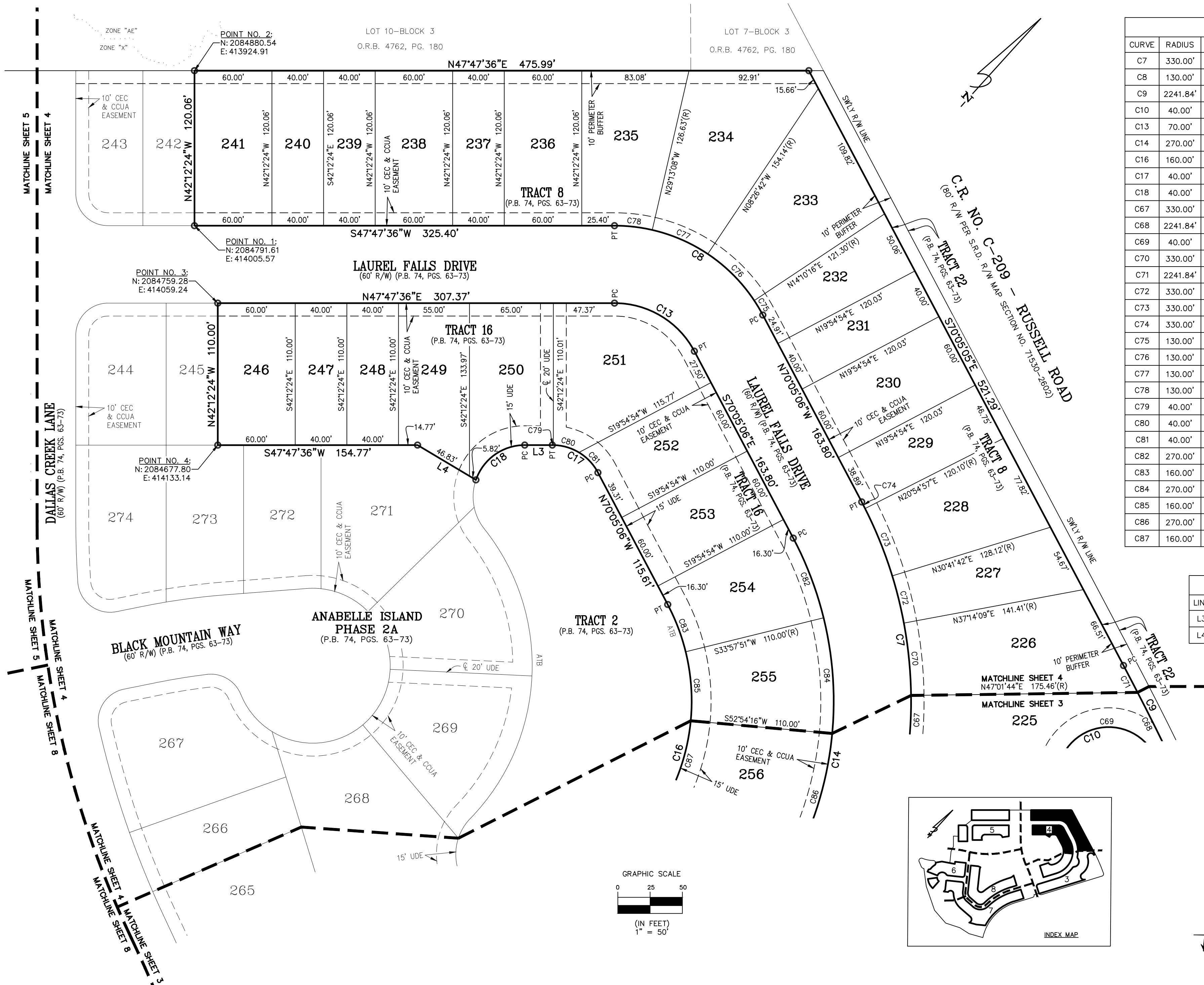
Clary & Associates
PROFESSIONAL SURVEYORS & MAPPERS
LB NO. 3731
3850 GROWN POINT ROAD
JACKSONVILLE, FLORIDA 32257
(904) 260-2703
WWW.CLARYASSOC.COM

Anabelle Island Phase 2B

A REPLAT OF TRACT 8 THROUGH 16, AS SHOWN ON THE PLAT OF ANABELLE ISLAND PHASE 2A, AS RECORDED IN PLAT BOOK 74, PAGES 63 THROUGH 73, INCLUSIVE, OF THE PUBLIC RECORDS OF CLAY COUNTY, FLORIDA, ALL LYING IN A PORTION OF THE MOSES E. LEVY GRANT, SECTIONS 39, AND THE F.M. ARRENDONDO JR. HEIRS GRANT, SECTION 40, ALL IN TOWNSHIP 5 SOUTH, RANGE 25 EAST, CLAY COUNTY, FLORIDA

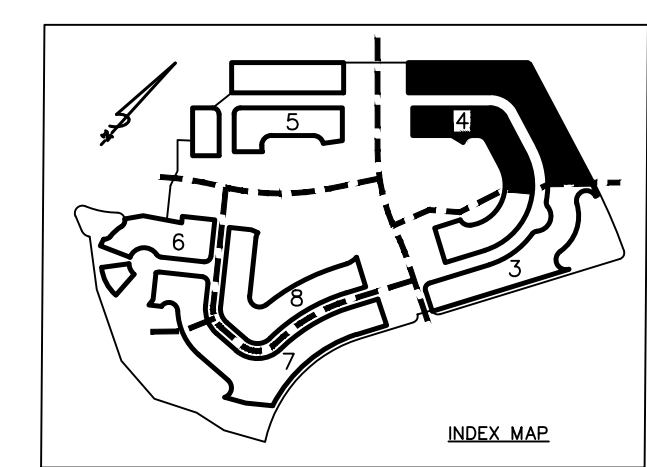
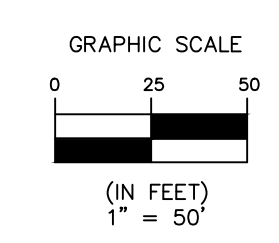
PLAT BOOK PAGE

SHEET 4 OF 8 SHEETS
SEE SHEET 2 FOR GENERAL NOTES & LEGEND



CURVE TABLE					
CURVE	RADIUS	LENGTH	DELTA	BEARING	CHORD
C7	330.00'	224.74'	39°01'14"	N50°34'28"W	220.42'
C8	130.00'	140.95'	62°07'19"	S78°51'15"W	134.15'
C9	2241.84'	73.83'	1°53'13"	S69°08'29"E	73.83'
C10	40.00'	119.54'	171°14'06"	S26°11'04"W	79.77'
C13	70.00'	75.90'	62°07'19"	N78°51'15"E	72.23'
C14	270.00'	475.08'	100°48'55"	S19°40'38"E	416.12'
C16	160.00'	306.13'	109°37'30"	N15°16'20"W	261.53'
C17	40.00'	43.37'	62°07'19"	S78°51'15"W	41.28'
C18	40.00'	49.54'	70°57'49"	S12°18'41"W	46.44'
C67	330.00'	37.67'	6°32'25"	N39°42'03"W	37.65'
C68	2241.84'	50.32'	1°17'10"	S68°50'27"E	50.32'
C69	40.00'	92.10'	131°55'39"	S45°50'18"W	73.06'
C70	330.00'	56.40'	9°47'35"	N47°52'03"W	56.34'
C71	2241.84'	23.51'	0°36'03"	S69°47'04"E	23.51'
C72	330.00'	37.67'	6°32'27"	N56°02'04"W	37.65'
C73	330.00'	56.32'	9°46'45"	N64°11'41"W	56.26'
C74	330.00'	5.76'	1°00'02"	N69°35'04"W	5.76'
C75	130.00'	13.03'	5°44'38"	N72°57'25"W	13.03'
C76	130.00'	51.31'	22°36'59"	N87°08'13"W	50.98'
C77	130.00'	47.13'	20°46'26"	S71°10'05"W	46.88'
C78	130.00'	29.47'	12°59'16"	S54°17'14"W	29.41'
C79	40.00'	0.82'	1°10'23"	S48°22'47"W	0.82'
C80	40.00'	20.80'	29°48'00"	S63°51'59"W	20.57'
C81	40.00'	21.75'	31°08'56"	N85°39'33"W	21.48'
C82	270.00'	66.20'	14°02'57"	S63°03'37"E	66.04'
C83	160.00'	39.23'	14°02'57"	N63°03'37"W	39.13'
C84	270.00'	90.25'	19°09'09"	S46°27'35"E	89.83'
C85	160.00'	53.89'	19°17'54"	N46°23'12"W	53.64'
C86	270.00'	102.75'	21°48'14"	S25°58'53"E	102.13'
C87	160.00'	60.48'	21°39'29"	N25°54'31"W	60.12'

LINE TABLE		
LINE	BEARING	DISTANCE
L3	S47°47'36"W	21.37'
L4	S78°35'05"W	52.65'



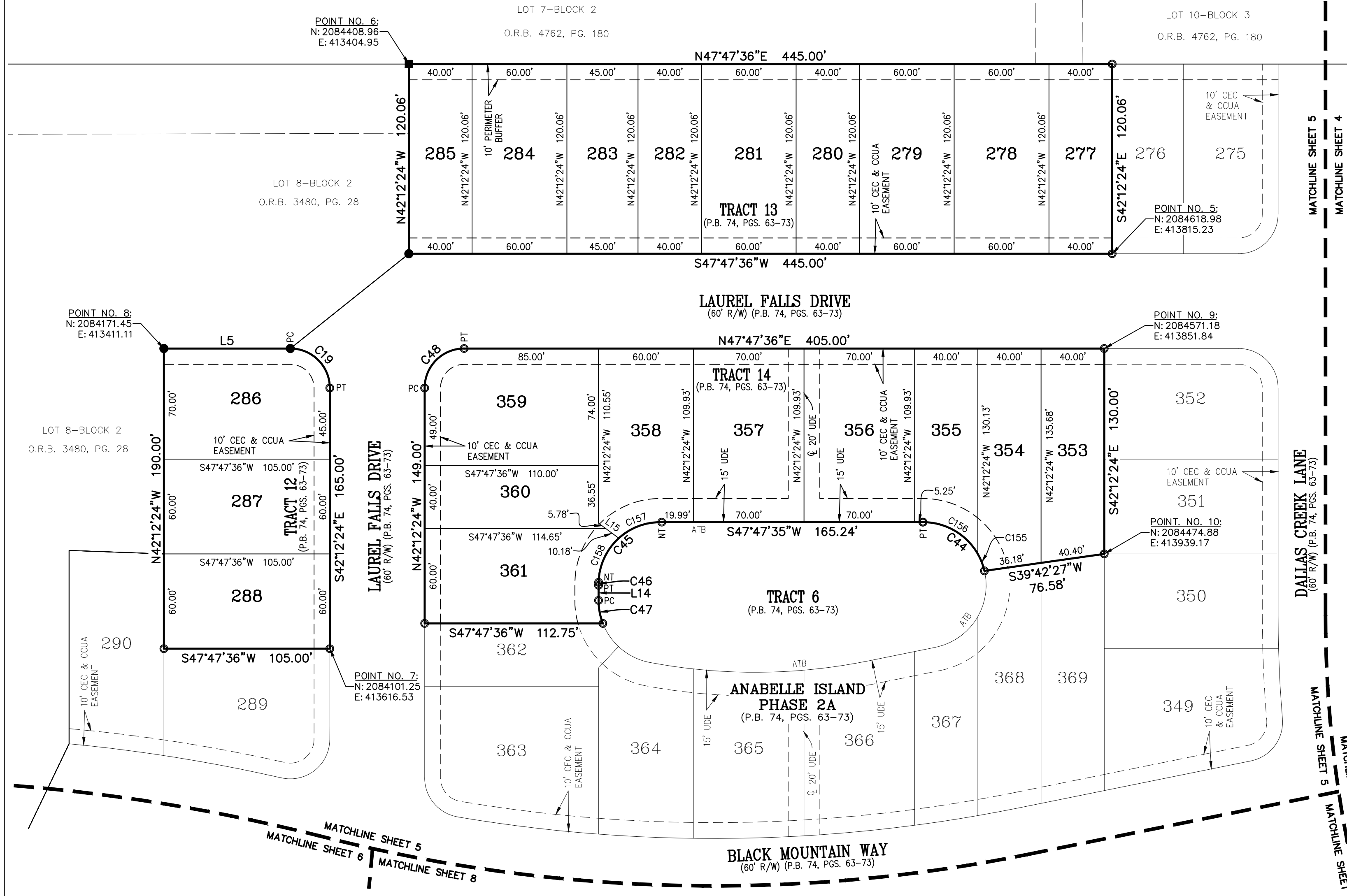
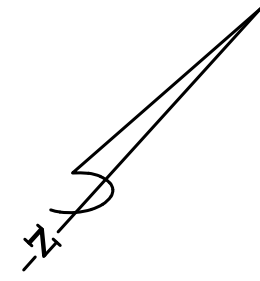
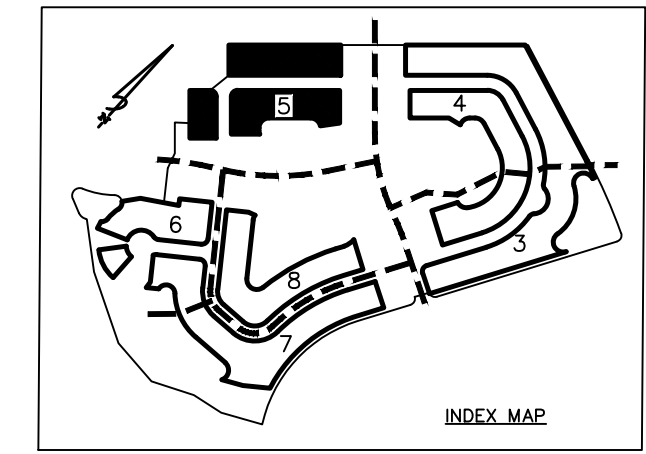
Clary & Associates
PROFESSIONAL SURVEYORS & MAPPERS
LB NO. 3731
3850 GROWN POINT ROAD
JACKSONVILLE, FLORIDA 32257
(904) 260-2703
WWW.CLARYASSOC.COM

Anabelle Island Phase 2B

A REPLAT OF TRACT 8 THROUGH 16, AS SHOWN ON THE PLAT OF ANABELLE ISLAND PHASE 2A, AS RECORDED IN PLAT BOOK 74, PAGES 63 THROUGH 73, INCLUSIVE, OF THE PUBLIC RECORDS OF CLAY COUNTY, FLORIDA, ALL LYING IN A PORTION OF THE MOSES E. LEVY GRANT, SECTIONS 39, AND THE F.M. ARRENDONDO JR. HEIRS GRANT, SECTION 40, ALL IN TOWNSHIP 5 SOUTH, RANGE 25 EAST, CLAY COUNTY, FLORIDA

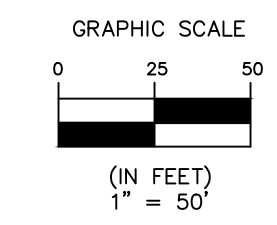
PLAT BOOK PAGE

SHEET 5 OF 8 SHEETS
SEE SHEET 2 FOR GENERAL NOTES & LEGEND



CURVE TABLE					
CURVE	RADIUS	LENGTH	DELTA	BEARING	CHORD
C19	25.00'	39.27'	90°00'00"	S87°12'24"E	35.36'
C44	40.00'	53.59'	76°45'28"	S86°10'20"W	49.67'
C45	39.02'	61.30'	90°00'00"	S04°10'38"W	55.19'
C46	40.00'	1.93'	2°46'04"	S40°49'22"E	1.93'
C47	40.00'	14.90'	21°20'08"	S52°52'28"E	14.81'
C48	25.00'	39.27'	90°00'00"	N02°47'36"E	35.36'
C155	40.00'	11.47'	16°25'57"	N63°39'55"W	11.43'
C156	40.00'	42.11'	60°19'31"	S77°57'21"W	40.20'
C157	39.02'	29.72'	43°38'14"	S27°21'31"W	29.01'
C158	39.02'	31.58'	46°21'46"	S17°38'29"E	30.72'

LINE TABLE		
LINE	BEARING	DISTANCE
L5	N47°47'36"E	80.00'
L14	S42°12'25"E	9.51'
L15	S84°20'24"W	15.96'



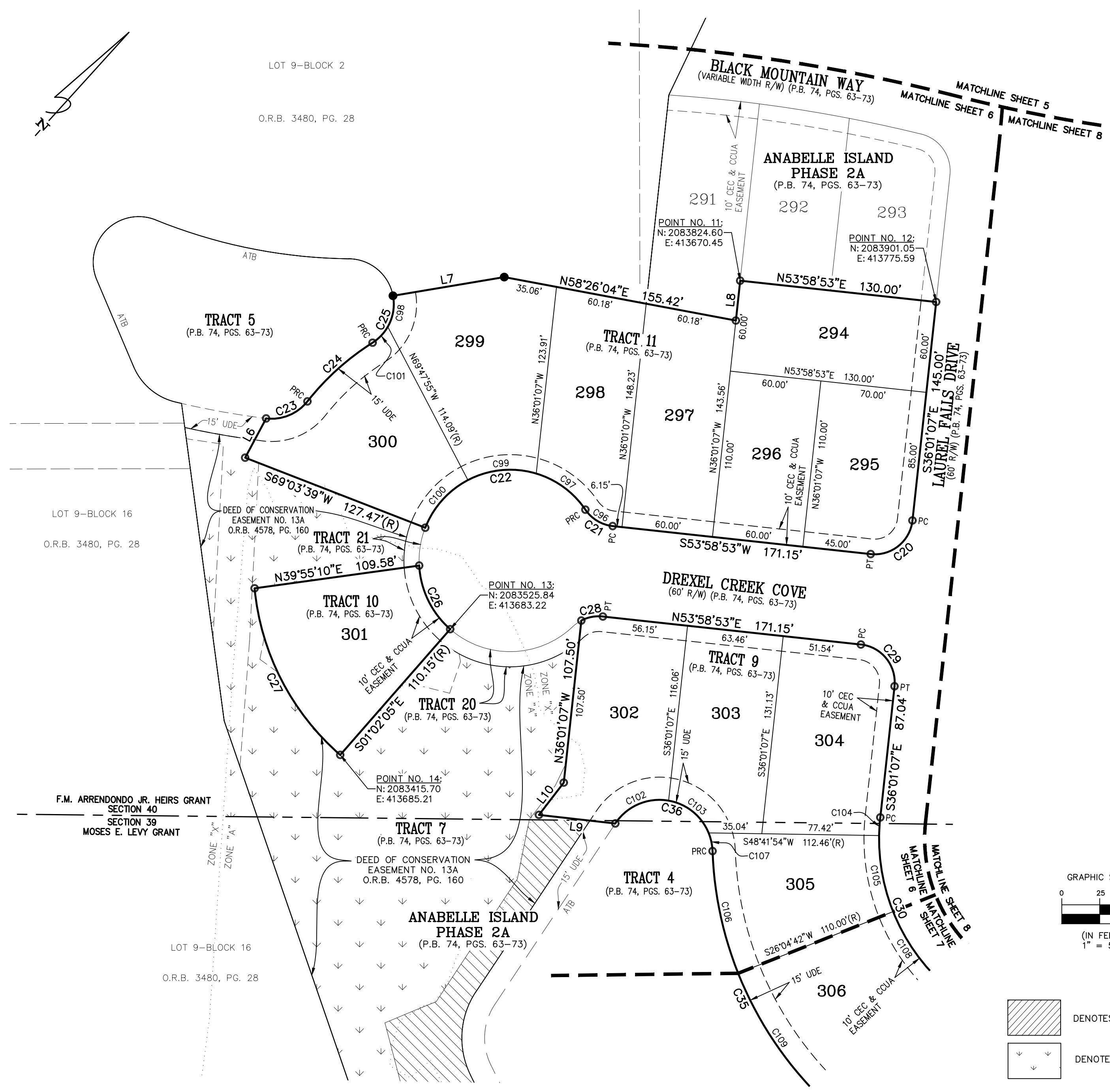
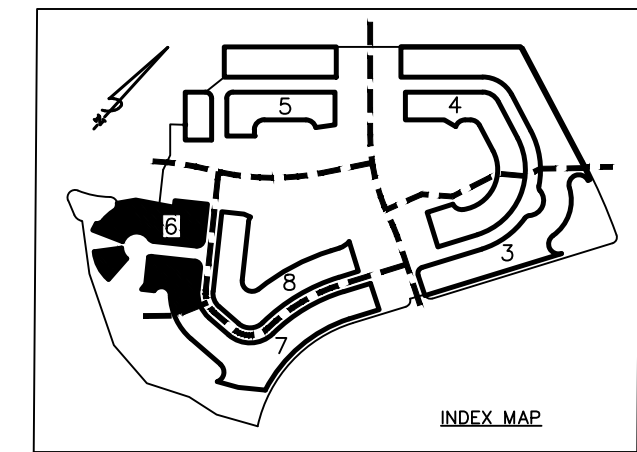
Clary & Associates
PROFESSIONAL SURVEYORS & MAPPERS
LB NO. 3731
3850 GROWN POINT ROAD
JACKSONVILLE, FLORIDA 32257
(904) 260-2703
WWW.CLARYASSOC.COM

Anabelle Island Phase 2B

A REPLAT OF TRACT 8 THROUGH 16, AS SHOWN ON THE PLAT OF ANABELLE ISLAND PHASE 2A, AS RECORDED IN PLAT BOOK 74, PAGES 63 THROUGH 73, INCLUSIVE, OF THE PUBLIC RECORDS OF CLAY COUNTY, FLORIDA, ALL LYING IN A PORTION OF THE MOSES E. LEVY GRANT, SECTIONS 39, AND THE F.M. ARRENDONDO JR. HEIRS GRANT, SECTION 40, ALL IN TOWNSHIP 5 SOUTH, RANGE 25 EAST, CLAY COUNTY, FLORIDA

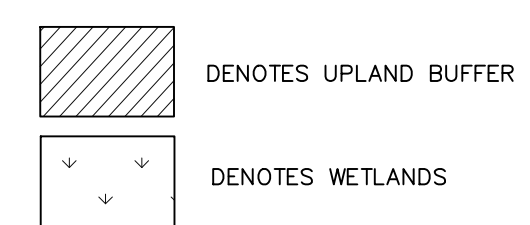
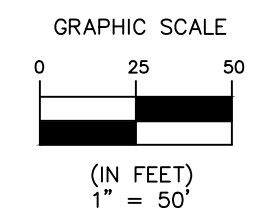
PLAT BOOK PAGE

SHEET 6 OF 8 SHEETS
SEE SHEET 2 FOR GENERAL NOTES & LEGEND



CURVE TABLE					
CURVE	RADIUS	LENGTH	DELTA	BEARING	CHORD
C20	25.00'	39.27'	90°00'00"	S08°58'53"W	35.36'
C21	25.00'	21.68'	49°40'47"	S78°49'16"W	21.00'
C22	60.00'	130.48'	124°36'01"	S41°21'39"W	106.25'
C23	30.00'	30.84'	58°53'33"	N25°25'23"E	29.50'
C24	170.00'	58.10'	19°34'54"	N05°46'04"E	57.82'
C25	30.00'	35.89'	68°32'32"	N18°42'45"W	33.79'
C26	60.00'	47.96'	45°47'45"	S68°08'14"E	46.69'
C27	166.68'	126.56'	43°30'19"	N69°23'49"W	123.55'
C28	25.00'	14.68'	33°38'39"	N37°09'33"E	14.47'
C29	25.00'	39.27'	90°00'00"	S81°01'07"E	35.36'
C30	130.00'	125.38'	55°15'37"	S63°38'56"E	120.58'
C35	240.00'	197.36'	47°06'59"	N67°43'15"W	191.85'
C36	35.00'	88.20'	144°23'10"	S63°38'39"W	66.65'
C96	25.00'	21.68'	49°40'47"	S78°49'16"W	21.00'
C97	60.00'	41.01'	39°09'29"	S84°04'56"W	40.21'
C98	30.00'	21.22'	40°31'36"	N32°43'14"W	20.78'
C99	60.00'	46.39'	44°18'06"	S42°21'08"W	45.25'
C100	60.00'	43.08'	41°08'27"	S00°22'08"E	42.16'
C101	30.00'	14.67'	28°00'57"	N01°33'02"E	14.52'
C102	35.00'	40.43'	66°10'40"	S24°32'24"W	38.22'
C103	35.00'	35.42'	57°58'46"	S86°37'07"W	33.93'
C104	130.00'	11.99'	5°16'59"	S38°39'37"E	11.98'
C105	130.00'	51.32'	22°37'12"	S52°36'42"E	50.99'
C106	240.00'	82.77'	19°45'32"	N54°02'32"W	82.36'
C107	35.00'	12.36'	20°13'44"	N54°16'38"W	12.29'
C108	130.00'	49.42'	21°46'49"	S74°48'42"E	49.12'
C109	240.00'	101.95'	24°20'24"	N76°05'29"W	101.19'

LINE TABLE		
LINE	BEARING	DISTANCE
L6	N14°07'14"W	29.32'
L7	N38°14'29"E	74.40'
L8	N36°01'07"W	26.44'
L9	S54°13'12"W	50.69'
L10	N04°41'37"W	26.86'



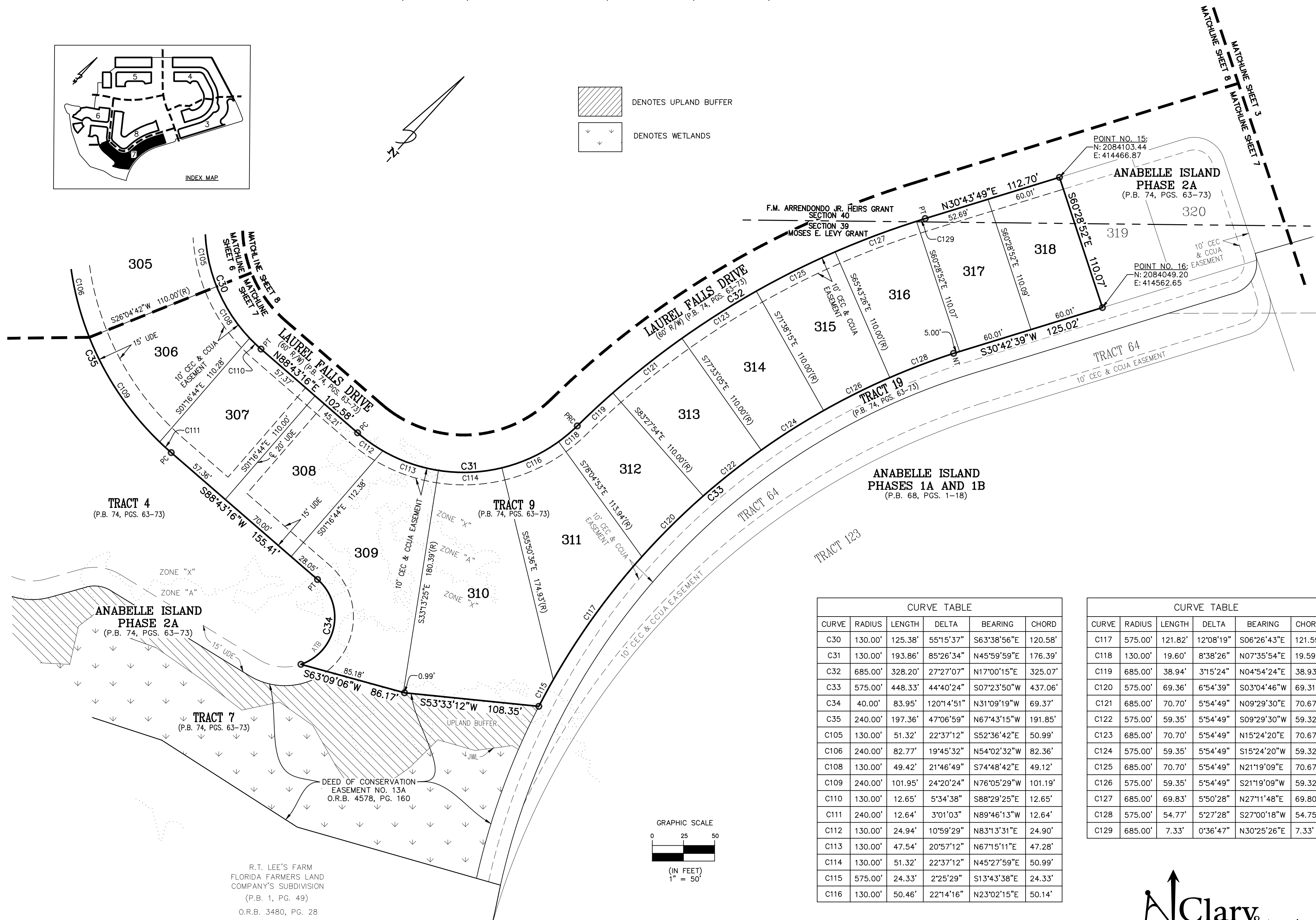
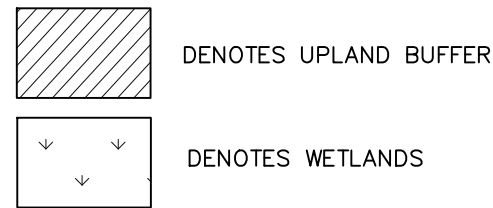
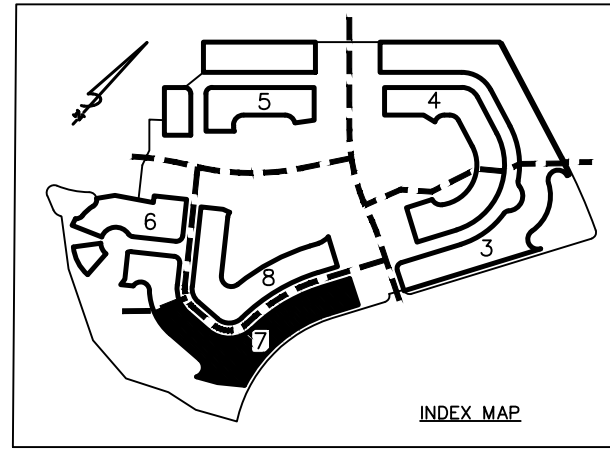
Clary & Associates
PROFESSIONAL SURVEYORS & MAPPERS
LB NO. 3731
3850 GROWN POINT ROAD
JACKSONVILLE, FLORIDA 32257
(904) 260-2703
WWW.CLARYASSOC.COM

Anabelle Island Phase 2B

PLAT BOOK PAGE

A REPLAT OF TRACT 8 THROUGH 16, AS SHOWN ON THE PLAT OF ANABELLE ISLAND PHASE 2A, AS RECORDED IN PLAT BOOK 74, PAGES 63 THROUGH 73, INCLUSIVE, OF THE PUBLIC RECORDS OF CLAY COUNTY, FLORIDA, ALL LYING IN A PORTION OF THE MOSES E. LEVY GRANT, SECTIONS 39, AND THE F.M. ARRENDONDO JR. HEIRS GRANT, SECTION 40, ALL IN TOWNSHIP 5 SOUTH, RANGE 25 EAST, CLAY COUNTY, FLORIDA

SHEET 7 OF 8 SHEETS
SEE SHEET 2 FOR GENERAL NOTES & LEGEND

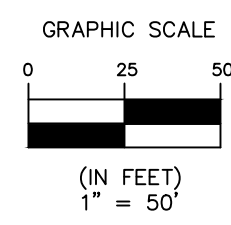


CURVE TABLE

CURVE	RADIUS	LENGTH	DELTA	BEARING	CHORD
C105	130.00'	51.32'	22°37'12"	S52°36'42"E	50.99'
C106	240.00'	82.77'	19°45'32"	N54°02'32"W	82.36'
C108	130.00'	49.42'	21°46'49"	S74°48'42"E	49.12'
C109	240.00'	101.95'	24°20'24"	N76°05'29"W	101.19'
C110	130.00'	12.65'	5°34'38"	S88°29'25"E	12.65'
C111	240.00'	12.64'	3°01'03"	N89°46'13"W	12.64'
C112	130.00'	24.94'	10°59'29"	N83°13'31"E	24.90'
C113	130.00'	47.54'	20°57'12"	N67°15'11"E	47.28'
C114	130.00'	51.32'	22°37'12"	N45°27'59"E	50.99'
C115	575.00'	24.33'	2°25'29"	S13°43'38"E	24.33'
C116	130.00'	50.46'	22°14'16"	N23°02'15"E	50.14'
C117	575.00'	121.82'	12°08'19"	S06°26'43"E	121.59'
C118	130.00'	19.60'	8°38'26"	N07°35'54"E	19.59'
C119	685.00'	38.94'	3°15'24"	N04°54'24"E	38.93'
C120	575.00'	69.36'	6°54'39"	S03°04'46"W	69.31'
C121	685.00'	70.70'	5°54'49"	N09°29'30"E	70.67'
C122	575.00'	59.35'	5°54'49"	S09°29'30"W	59.32'
C123	685.00'	70.70'	5°54'49"	N15°24'20"E	70.67'
C124	575.00'	59.35'	5°54'49"	S15°24'20"W	59.32'
C125	685.00'	70.70'	5°54'49"	N21°19'09"E	70.67'
C126	575.00'	59.35'	5°54'49"	S21°19'09"W	59.32'
C127	685.00'	69.83'	5°50'28"	N27°11'48"E	69.80'
C128	575.00'	54.77'	5°27'28"	S27°00'18"W	54.75'
C129	685.00'	7.33'	0°36'47"	N30°25'26"E	7.33'

CURVE TABLE

CURVE	RADIUS	LENGTH	DELTA	BEARING	CHORD
C105	130.00'	51.32'	22°37'12"	S52°36'42"E	50.99'
C106	240.00'	82.77'	19°45'32"	N54°02'32"W	82.36'
C108	130.00'	49.42'	21°46'49"	S74°48'42"E	49.12'
C109	240.00'	101.95'	24°20'24"	N76°05'29"W	101.19'
C110	130.00'	12.65'	5°34'38"	S88°29'25"E	12.65'
C111	240.00'	12.64'	3°01'03"	N89°46'13"W	12.64'
C112	130.00'	24.94'	10°59'29"	N83°13'31"E	24.90'
C113	130.00'	47.54'	20°57'12"	N67°15'11"E	47.28'
C114	130.00'	51.32'	22°37'12"	N45°27'59"E	50.99'
C115	575.00'	24.33'	2°25'29"	S13°43'38"E	24.33'
C116	130.00'	50.46'	22°14'16"	N23°02'15"E	50.14'
C117	575.00'	121.82'	12°08'19"	S06°26'43"E	121.59'
C118	130.00'	19.60'	8°38'26"	N07°35'54"E	19.59'
C119	685.00'	38.94'	3°15'24"	N04°54'24"E	38.93'
C120	575.00'	69.36'	6°54'39"	S03°04'46"W	69.31'
C121	685.00'	70.70'	5°54'49"	N09°29'30"E	70.67'
C122	575.00'	59.35'	5°54'49"	S09°29'30"W	59.32'
C123	685.00'	70.70'	5°54'49"	N15°24'20"E	70.67'
C124	575.00'	59.35'	5°54'49"	S15°24'20"W	59.32'
C125	685.00'	70.70'	5°54'49"	N21°19'09"E	70.67'
C126	575.00'	59.35'	5°54'49"	S21°19'09"W	59.32'
C127	685.00'	69.83'	5°50'28"	N27°11'48"E	69.80'
C128	575.00'	54.77'	5°27'28"	S27°00'18"W	54.75'
C129	685.00'	7.33'	0°36'47"	N30°25'26"E	7.33'



R.T. LEE'S FARM
FLORIDA FARMERS LAND
COMPANY'S SUBDIVISION
(P.B. 1, PG. 49)
O.R.B. 3480, PG. 28

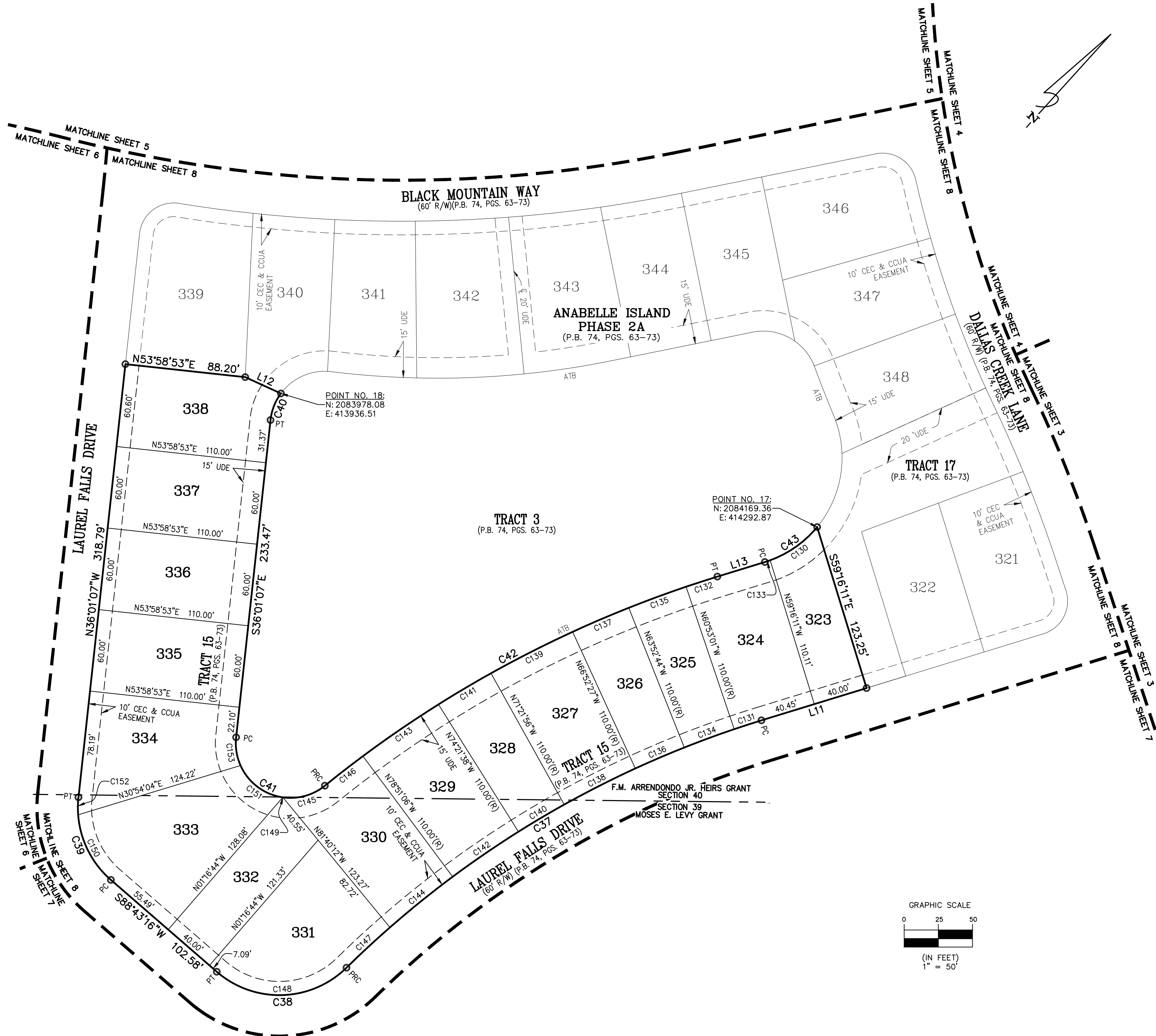
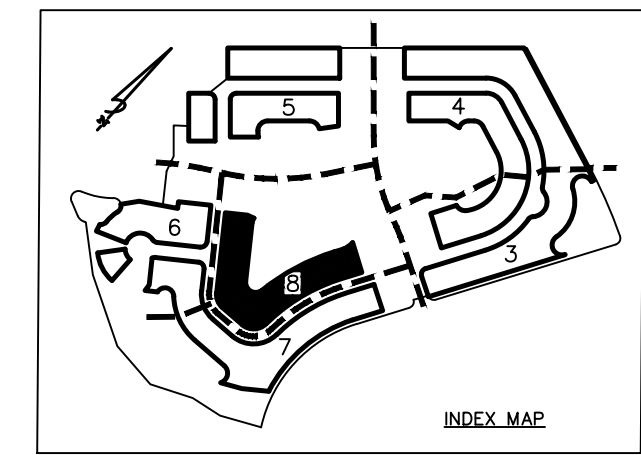


Anabelle Island Phase 2B

A REPLAT OF TRACT 8 THROUGH 16, AS SHOWN ON THE PLAT OF ANABELLE ISLAND PHASE 2A, AS RECORDED IN PLAT BOOK 74, PAGES 63 THROUGH 73, INCLUSIVE, OF THE PUBLIC RECORDS OF CLAY COUNTY, FLORIDA, ALL LYING IN A PORTION OF THE MOSES E. LEVY GRANT, SECTIONS 39, AND THE F.M. ARRENDONDO JR. HEIRS GRANT, SECTION 40, ALL IN TOWNSHIP 5 SOUTH, RANGE 25 EAST, CLAY COUNTY, FLORIDA

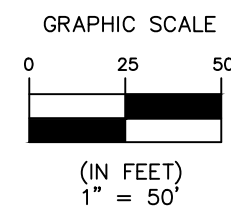
PLAT BOOK PAGE

SHEET 8 OF 8 SHEETS
SEE SHEET 2 FOR GENERAL NOTES & LEGEND



CURVE TABLE					
CURVE	RADIUS	LENGTH	DELTA	BEARING	CHORD
C37	745.00'	356.95'	27°27'07"	S17°00'15"W	353.55'
C38	70.00'	104.39'	85°26'34"	S45°59'59"W	94.98'
C39	70.00'	67.51'	55°15'37"	N63°38'56"W	64.93'
C40	40.00'	21.13'	30°16'07"	S20°53'04"E	20.89'
C41	40.00'	94.38'	135°11'39"	N76°23'03"E	73.96'
C42	855.00'	327.45'	21°56'36"	N19°45'31"E	325.45'
C43	80.00'	46.71'	33°27'18"	N14°00'10"E	46.05'
C130	80.00'	42.61'	30°30'56"	N12°31'59"E	42.11'
C131	745.00'	20.99'	1°36'50"	S29°55'24"W	20.99'
C132	855.00'	24.09'	1°36'50"	N29°55'24"E	24.08'
C133	80.00'	4.10'	2°56'22"	N29°15'38"E	4.10'
C134	745.00'	38.95'	2°59'43"	S27°37'07"W	38.94'
C135	855.00'	44.70'	2°59'43"	N27°37'07"E	44.69'
C136	745.00'	38.95'	2°59'43"	S24°37'25"W	38.94'
C137	855.00'	44.70'	2°59'43"	N24°37'25"E	44.69'
C138	745.00'	58.40'	4°29'29"	S20°52'49"W	58.39'
C139	855.00'	67.02'	4°29'29"	N20°52'49"E	67.01'
C140	745.00'	38.94'	2°59'43"	S17°08'13"W	38.94'
C141	855.00'	44.70'	2°59'43"	N17°08'13"E	44.69'
C142	745.00'	58.40'	4°29'28"	S13°23'38"W	58.38'
C143	855.00'	67.02'	4°29'28"	N13°23'38"E	67.00'
C144	745.00'	58.99'	4°32'12"	S08°52'48"W	58.97'
C145	40.00'	32.83'	4°7'01"10"	N32°17'48"E	31.91'
C146	855.00'	35.24'	2°21'40"	N09°58'04"E	35.23'
C147	745.00'	43.34'	3°20'00"	S04°56'42"W	43.34'
C148	70.00'	104.39'	85°26'34"	S45°59'59"W	94.98'
C149	40.00'	0.03'	0°02'15"	N55°49'31"E	0.03'
C150	70.00'	54.67'	44°44'59"	N68°54'15"W	53.29'
C151	40.00'	40.41'	5°52'35"	N84°46'56"E	38.71'
C152	70.00'	12.84'	10°30'38"	N41°16'26"W	12.82'
C153	40.00'	21.13'	30°15'39"	S51°08'57"E	20.88'

LINE TABLE		
LINE	BEARING	DISTANCE
L11	S30°43'49"W	80.45'
L12	N72°23'15"E	28.73'
L13	N30°43'49"E	36.34'



Clary & Associates
PROFESSIONAL SURVEYORS & MAPPERS

LB NO. 3731
3850 GROWN POINT ROAD
JACKSONVILLE, FLORIDA 32257
(904) 260-2703
WWW.CLARYASSOC.COM