



# Clay County

## PARKS & RECREATION MASTER PLAN

BOARD OF COUNTY COMMISSIONERS  
11.26.24



# The Project Team



+

## Community Solutions Group



Project Lead  
+ Project Management  
+ Parks Planning

## RRC Associates



Statistically  
Significant Survey

# We are Excited to be Here!



## GAI's Community Planning + Design Studio

Park + Urban Planning | Urban Analytics | Landscape Architecture + Design



# Agenda

- Project Overview
- Existing Conditions
- Public Input
- The Vision
- Implementation Toolkit

# Our Assignment



## **Blueprint for the Future**

Create a 10-year vision for a future parks system that responds to a growing community



## **Improve, Sustain, and Enhance**

Improve, sustain, and enhance the quality of life in Clay County



## **Simplify & Standardize**

Develop a common design language for parks within Clay County for improved aesthetics and maintenance

# Master Plan Process



WE ARE  
HERE!

01

02

03

04

## Existing Conditions

Demographics  
Park + Facility  
Evaluations  
Service Area

## Public Input

Survey  
Public Workshops  
Focus Groups

## Master Plan Development

Level of Service  
Gap Analysis  
Park Standards

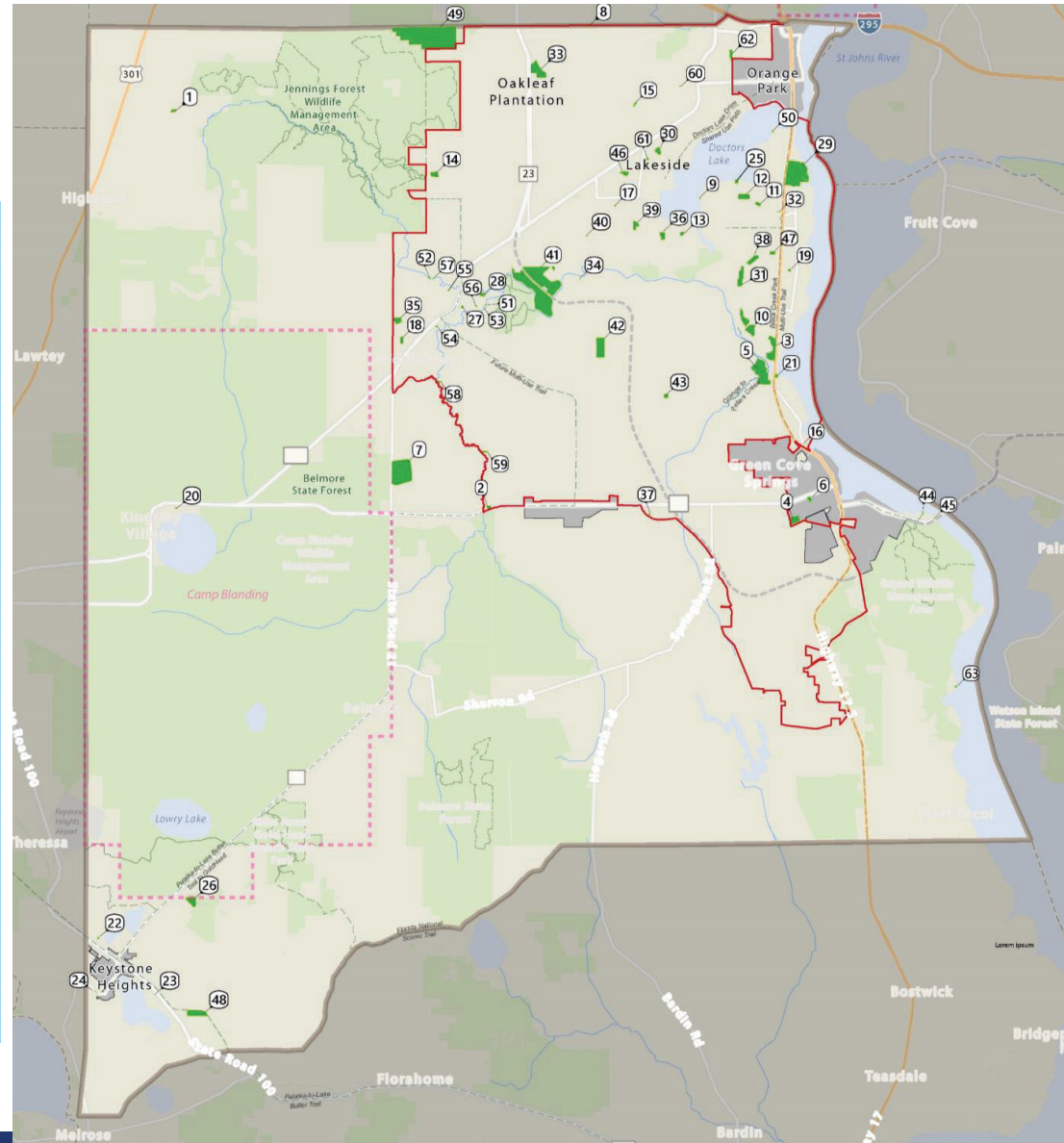
## Strategy & Recommendations

Guiding Principles  
Strategy  
Recommendations  
Capital Improvements

# EXISTING CONDITIONS.

# The Park System

Park ID	Park/Facility Name	Classification	Park ID	Park/Facility Name	Classification
1	Antler's Run Park	Future	36	Paul C. Armstrong Park	Community
2	Black Creek Kayak Launch	Future	37	Pier Station Park	Neighborhood
3	Black Creek Park And Trail	Neighborhood	38	Plantation Sports Complex	Community
4	Boyd Park	Future	39	Pond to Park	Future
5	Camp Chowenwaw Park	Regional	40	Ridaught Landing Park	Neighborhood
6	Carl Pugh Park	Community	41	Rideout Point Preserve	Regional
7	Clay County Regional Sports Complex	Regional	42	Ronnie Van Zant Park	Community
8	Deerfield Point Park	Neighborhood	43	Saratoga Springs Park	Future
9	Doctors Lake Park	Neighborhood	44	Shands Boat Ramp	Neighborhood
10	Dupont Fleming Island	No type defined	45	Shands Fishing Pier	Future
11	Eagle Harbor Park	Neighborhood	46	Tanglewood Park	Community
12	Eagle Harbor Soccer Complex	Community	47	Thunderbolt Park	Neighborhood
13	Four Silos Park	Neighborhood	48	Twin Lakes Park	Community
14	Foxmeadow Recreational Park	Neighborhood	49	Veterans Park	Regional
15	Foxridge Park	Neighborhood	50	Voluntary Home Buy Out Property 1	Future
16	Governors Creek Boat Ramp	Neighborhood	51	Voluntary Home Buy Out Property 2	Future
17	Greenwood Park	Neighborhood	52	Voluntary Home Buy Out Property 3	Future
18	Hunter Douglas Park	Neighborhood	53	Voluntary Home Buy Out Property 4	Future
19	Island Forest Park	Neighborhood	54	Voluntary Home Buy Out Property 5	Future
20	Kingsley Lake Park	Neighborhood	55	Voluntary Home Buy Out Property 6	Future
21	Knight's Marina & Boat Ramp	Neighborhood	56	Voluntary Home Buy Out Property 7	Future
22	Lake Brooklyn Boat Ramp	Boat Ramp	57	Voluntary Home Buy Out Property 8	Future
23	Lake Geneva Boat Ramp	Boat Ramp	58	Voluntary Home Buy Out Property 9	Future
24	Lake Geneva Park	Neighborhood	59	Voluntary Home Buy Out Property 10	Future
25	Lake Shore Park Boat Ramp	Neighborhood	60	Voluntary Home Buy Out Property 11	Future
26	Little Rain Lake Park	Community	61	W. E. Vames Park	Neighborhood
27	Markus Lane Park	Future	62	Walter Odum Park	Community
28	Master Sgt. John E. Hayes Memorial Park & Main Street Boat Ramp	Neighborhood	63	Williams Park & Boat Ramp	Neighborhood
29	Mocassin Slough	Regional			
30	Moody Avenue Park	Neighborhood			
31	Neptune Park	Community			
32	Oak Creek Park	Neighborhood			
33	Oakleaf Community Park	Community			
35	Omega Park	Community			



# Document Review



## Planning Efforts

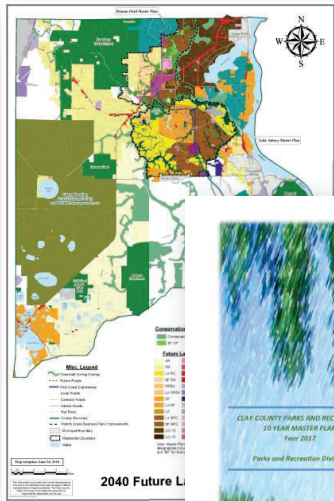


EXHIBIT I

### INTRODUCTION

Recreation and Open Space Element

The Recreation and Open Space Element is intended to guide public decision-making while providing for a comprehensive system of public and private recreation and open space sites available for public use. This Element considers the existing County recreational facilities, determines current deficiencies, and projects future recreation and open space needs. Goals, objectives, and policies are then recommended to guide decisions based on the projected recreational demand of visitors and residents in Clay County.

Recreation is required to maintain a healthy balance in life. What people do in their spare time is a reflection of their internal needs and desires, and the quality and quantity of opportunities available to a community has a direct effect on the quality of life in Clay County.

Recreation is required to maintain a healthy balance in life. What people do in their spare time is a reflection of their internal needs and desires, and the quality and quantity of opportunities available to a community has a direct effect on the quality of life in Clay County.



## Site Master Plans



# PUBLIC INPUT.



# Survey Research Methods

1

## Statistically Valid (Invitation Survey)

Surveys were mailed to a systematic random sample of residential addresses in Clay County, with the option to complete online through a password-protected website (1 response per household)



362

Invitation surveys completed  
+/- 5.2% Margin of Error

2

## Open Link Survey

Later, the online survey was made available to all Clay County stakeholders, including non-county residents (e.g., commuters, residents of nearby communities)



617

Open Link surveys completed



5,000 Surveys Mailed

**20**  
Participants

# Focus Groups

## 3 Meetings: April 3-11, 2024

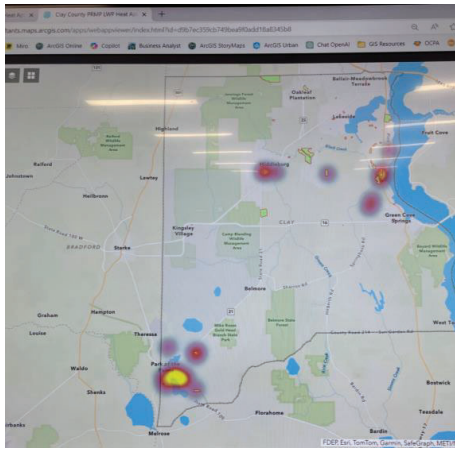


61

Participants

# Public Workshops

## 6 Workshops, April 10-18, 2024



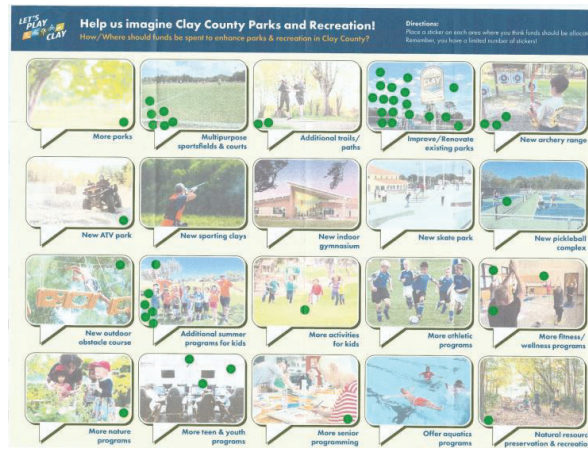
### Live Work Play

Participants shared places their most used parks in relation to their residences and workplaces.



### Write-on-Me

Participants write what parks they enjoy and potential improvements.



### Priority Voting

Participants identify the park elements that they consider to be the highest priorities.



### Programs/Operations

Participants identify programs they would like to see prioritized.

# Key Takeaways

## Public Engagement



### All Ages and Abilities

- Provide ADA accessible amenities and facilities
- Provide play spaces
- Multigenerational parks and programming



### Walkability and Connectivity

- Connect parks through trails
- Support County trail efforts



### User Experience and Comfort

- Lighting and security upgrades
- Shade and Seating



### Plan for Tomorrow

- Mix of passive and active recreation
- Meet indoor and outdoor recreation needs
- Add park amenities
- Provide parks for future residents



### Maintain Existing

- Modernize existing parks
- Address infrastructure issues
- Enhance awareness of existing offerings

# Level of Service



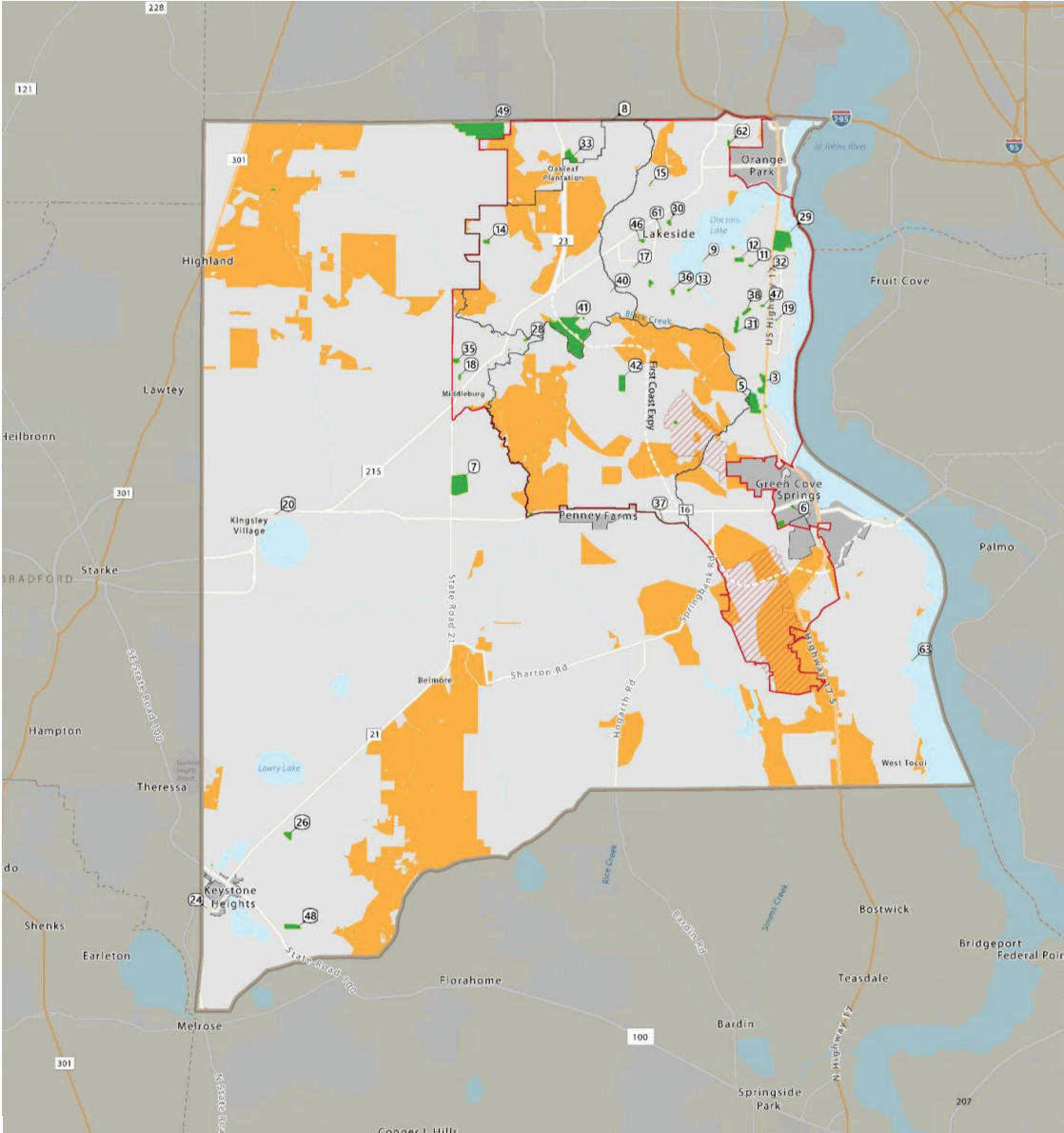
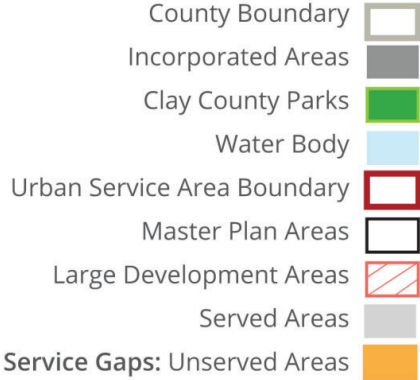
## Standards Update: Goals

1. Park Type Definitions – Simplify and standardize park type definitions to provide equitable park experiences throughout the County.
2. Geographic Service Area Standards – Meet demand for “close to home” parks as identified in public engagement.

# Level of Service Neighborhood Gaps

## Takeaways

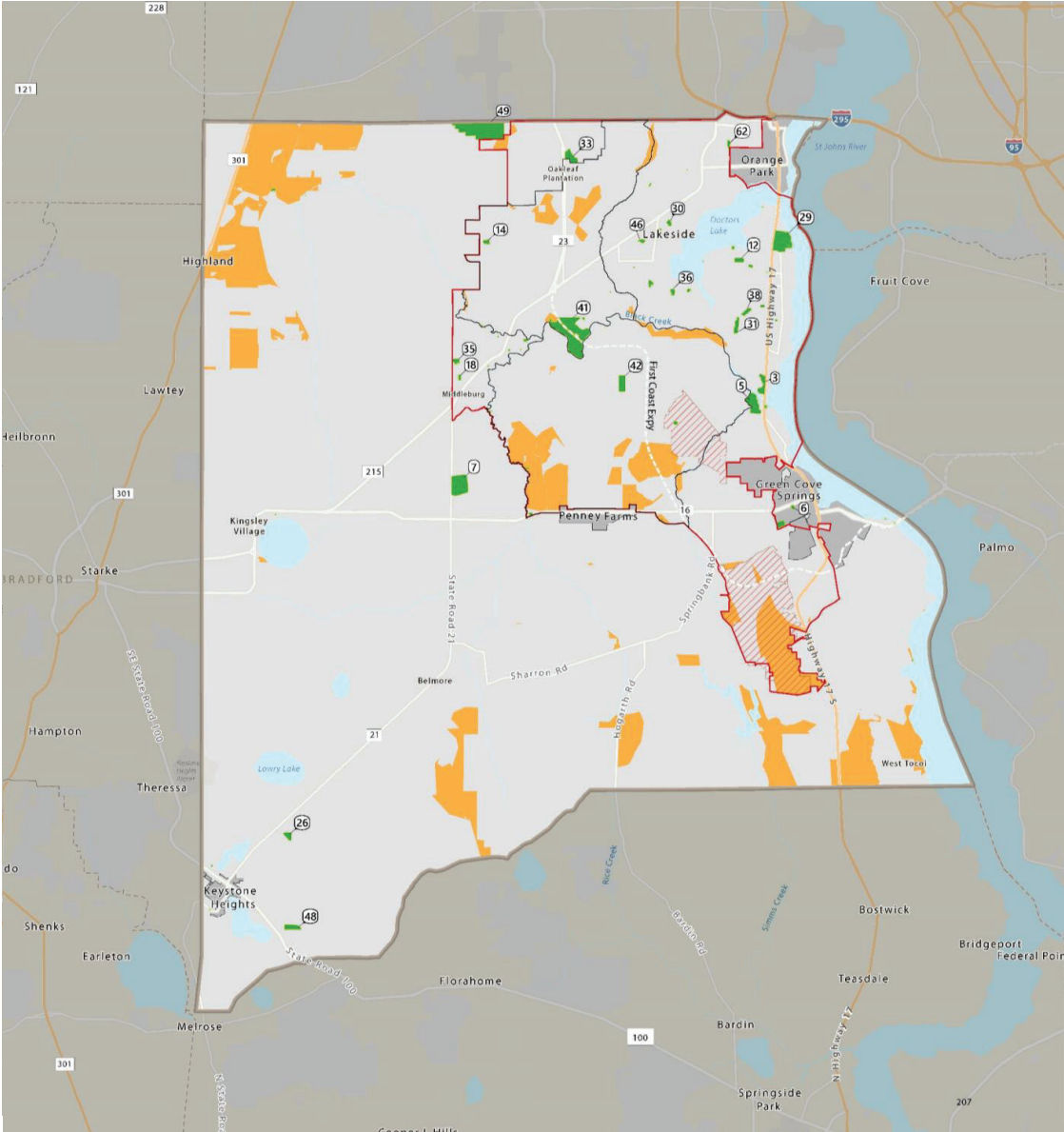
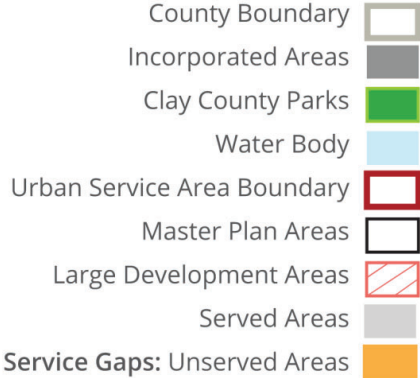
- Level of Service
  - Urban: 3 miles
  - Rural: 5 miles
- Pockets of unserved areas within Urban Service Boundary
- Some gaps in service in rural areas



# Level of Service Community Gaps

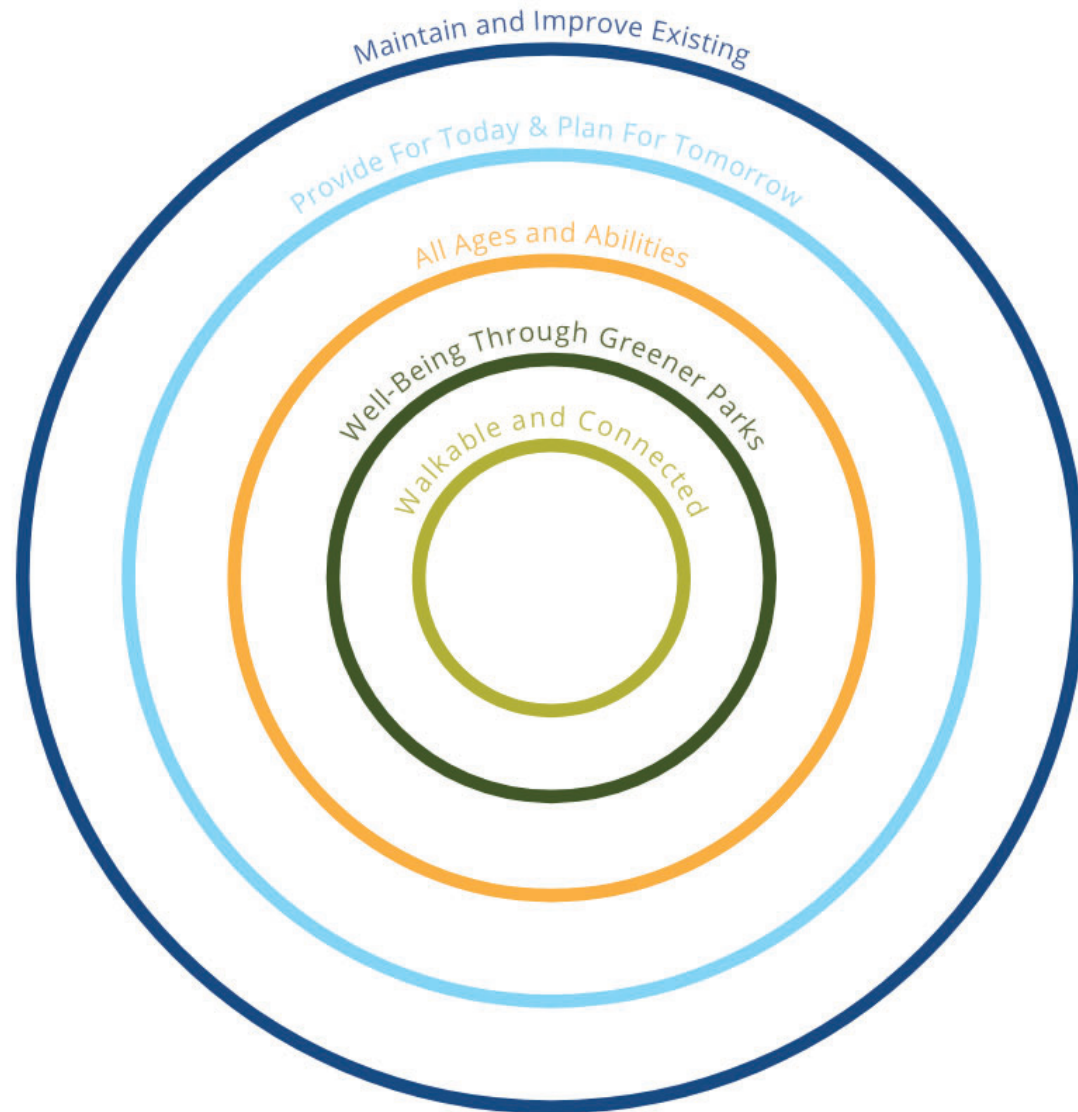
## Takeaways

- Level of Service
  - Urban: 5 miles
  - Rural: 10 miles
- Smaller pockets of unserved areas within Urban Service Boundary
- Gaps in service in rural areas focused on northwest



# THE VISION.

# Guiding Principles



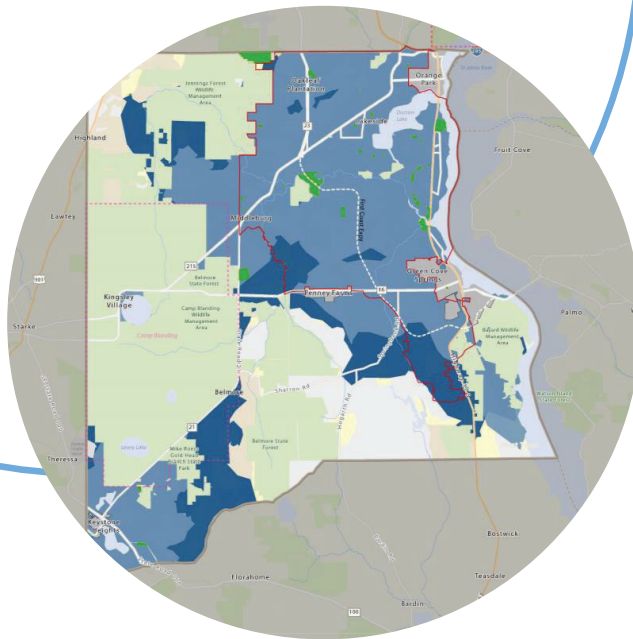
## Maintain and Improve Existing



Parks within Clay County are well maintained and modernized to continue to serve the community at a high quality.

- Update and modernize existing parks.
- Ensure parks are functional.
- Create a distinctive Clay County parks look.

## Provide for Today & Plan for Tomorrow



The parks system provides for leisure and recreation needs of today while planning for future needs.

- Enhance existing park system to better align with residents' needs.
- Fill gaps in service and provide for future County growth.
- Develop strategy for indoor and aquatics recreation.

## All Ages & Abilities



Parks provide opportunities for leisure and recreation for all Clay residents, regardless of age and ability.

- Parks provide ADA accessible amenities and facilities.
- Every park provides amenities for users of all ages.
- Programs are representative of diverse populations.

## Well-Being Through Greener Parks



Parks are welcoming places of respite for Clay County residents, providing access to healthy lifestyles.

- Protect and enhance tree canopy and natural areas.
- Provide access to fitness and wellness within parks.
- Provide nature-based recreation opportunities.

## Walkable and Connected

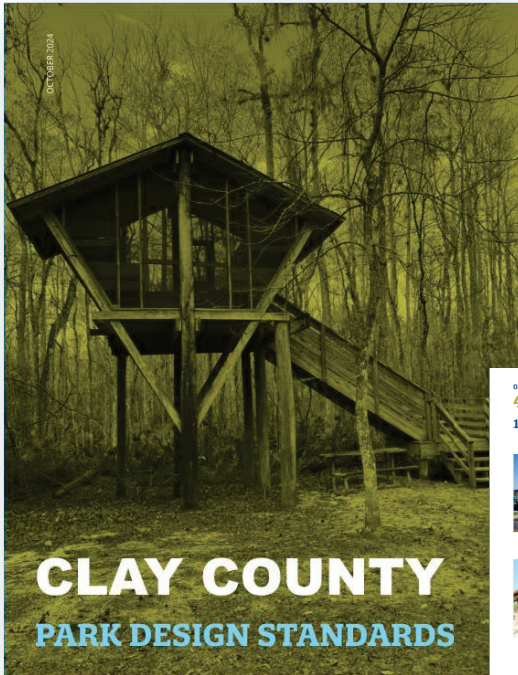


Clay County residents can safely bike or walk to parks and have access to trail experiences.

- Provide safe pedestrian connections into parks.
- Encourage multi-modal transportation use.
- Coordinate and support the development of trails connecting to parks.

# TOOLKIT.

# Park Design Standards



These design guidelines provide both a design direction and enough flexibility to both unify and differentiate parks throughout the system.

04 Design Standards  
**4.2 SITE FURNISHINGS**  
**1. Pavilions**

**Metal Pavilion**  
 Specifications: Gable roof, 16 ga. standing seam, powdercoated steel, tongue and groove deck below. Place on concrete paving. Column wraps, colors, additional detailing may be added to coordinate with other park elements and/or themes. Include accessories in large pavilions including lighting and ceiling fans. Manufacturer to be determined by designer.  
 Group pavilions: rectangular, 29'-30" x 40'-50"; small pavilions, 16'-20' square or octagonal.  
 Park Type: Active, Urban, Nature

**Wood Pavilion**  
 Specifications: Gable roof, 16 ga. standing seam, tongue and groove deck below. Wood columns and roof framing. Place on concrete paving. Column wraps, and colors, additional detailing may be added to coordinate with other park elements and/or themes. Include accessories in large pavilions including lighting and ceiling fans.  
 Group pavilions: rectangular, 29'-30" x 40'-50"; small pavilions, 16'-20' square or octagonal.  
 Park Type: Active, Nature

**2. Benches**

**Metal Bench**  
 Manufacturer: DuMor  
 Style: Bench 500  
 Color: Textured silver w/ textured grey slats  
 Length: 6'  
 Park Type: Active, Urban

**Metal Bench**  
 Manufacturer: DuMor  
 Style: Bench 501  
 Color: Textured silver w/ textured grey slats  
 Length: 6'  
 Park Type: Active, Urban

**Metal Bench**  
 Manufacturer: Anova  
 Style: Victory Backed Bench, embedded, expanded steel deep seat bench  
 Color: Black frame, seat color TBD  
 Length: 6' or 8'  
 Park Type: Active

**Metal Bench**  
 Manufacturer: Anova  
 Style: Victory Flat Bench, embedded, expanded steel deep seat bench  
 Color: Black frame, seat color TBD  
 Length: 6' or 8'  
 Park Type: Active

**Wood Bench**  
 Manufacturer: PRIDE Enterprises  
 Style: Classic Wood Bench, In-Ground Mounted  
 Color: Galvanized frame and arms, natural wood slats  
 Length: 6'  
 Park Type: Active and Nature

**Wood Bench**  
 Manufacturer: PRIDE Enterprises  
 Style: Trailside Wood Bench, In-Ground Mounted  
 Color: Galvanized frame and arms, natural wood slats  
 Length: 6'  
 Park Type: Active and Nature

**Wood Log Bench**  
 Manufacturer: Lundy (sourced from timber or tree care company)  
 Style: 18" x 18" min. dimensions, natural wood finish  
 Length: 6' minimum  
 Park Type: Nature

50 | Clay County Parks Master Plan Update

## Purpose

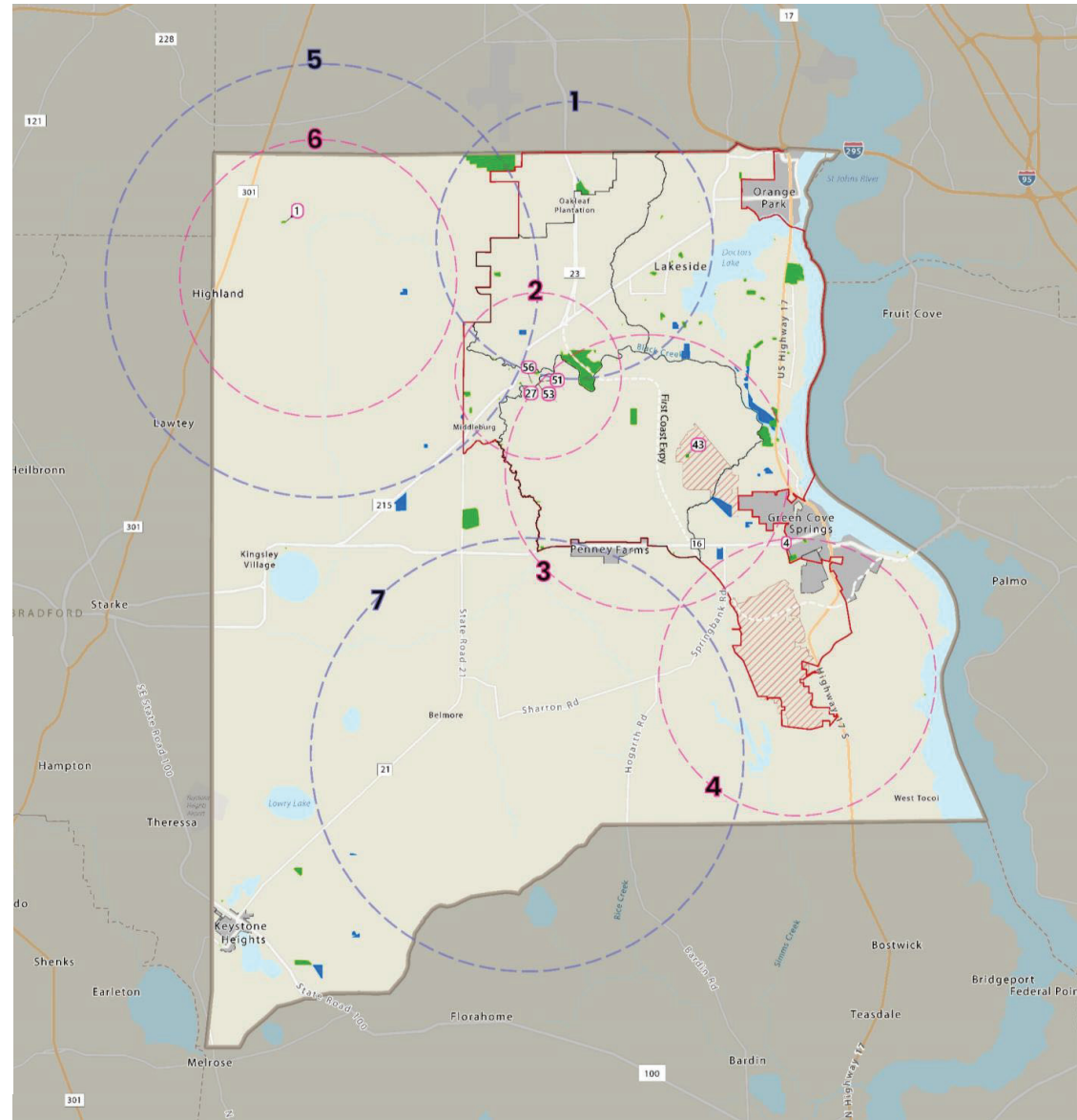
1. Provides consistent park brand for all County parks.
2. Aid in the ease of maintenance and operations throughout the system.

# Level of Service Vision Map

## Responding to Park Service Gaps

1. Existing Park Improvements and Expansions
2. Activating County-Owned Land
3. Acquiring Vacant Land

- Areas To Be Served by Park Development or Improvement 
- Areas To Be Served by Park Land Acquisition 
- County Boundary 
- Incorporated Areas 
- Clay County Parks 
- County-Owned Property 
- Water Body 
- Urban Service Area Boundary 
- Master Plan Areas 
- Large Development Areas 



# Other Implementation Tools



- Undeveloped Site Recommendations
  - Recommendations for existing undeveloped park sites
- Prioritization Scoring
  - Scoring for prioritization including:
    1. Overall Park Condition
    2. Park Type Reclassification Needs
    3. Site-specific Master Plans Needs
    4. Park Type Equity Standard Gaps
- Recommended Park Improvements
  - Cost Summary of recommended improvements

**Thank YOU!**

