

**Attachment
“B”
KH CRA
Presentation**



Completed Wastewater Treatment Plant





Completed Sewer / Water Mains





Completed Parking Improvements





Completed Rails to Trails Trailhead \$150K



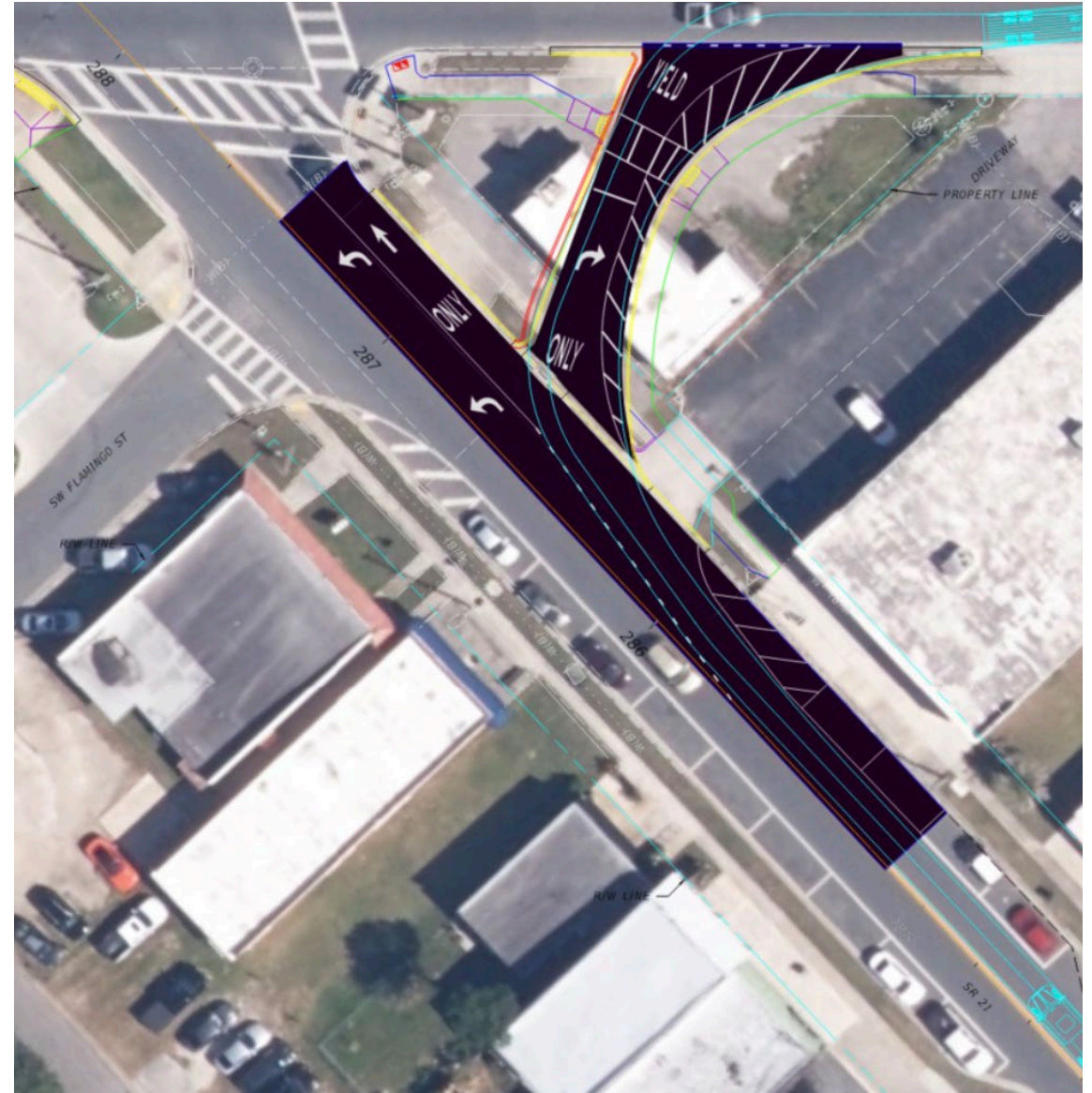


Completed Façade Grants \$25K





Completed Property Acquisition / Demo \$260K





Completed Historic Keystone Beach Mural

\$20K





Completed Alleyway Improvements \$15K





Completed Tennis Court Rebuild \$118K





Streetscapes and Parking Improvements



These initiatives focus on enhancing roadways within the CRA, including S. Lawrence Boulevard, Commercial Circle, Sylvan Way, and others. Planned improvements include:

- Upgraded parking facilities
- Enhanced landscaping, hardscaping, and wayfinding
- Sidewalk reconstruction, ADA compliant
- General roadway enhancements



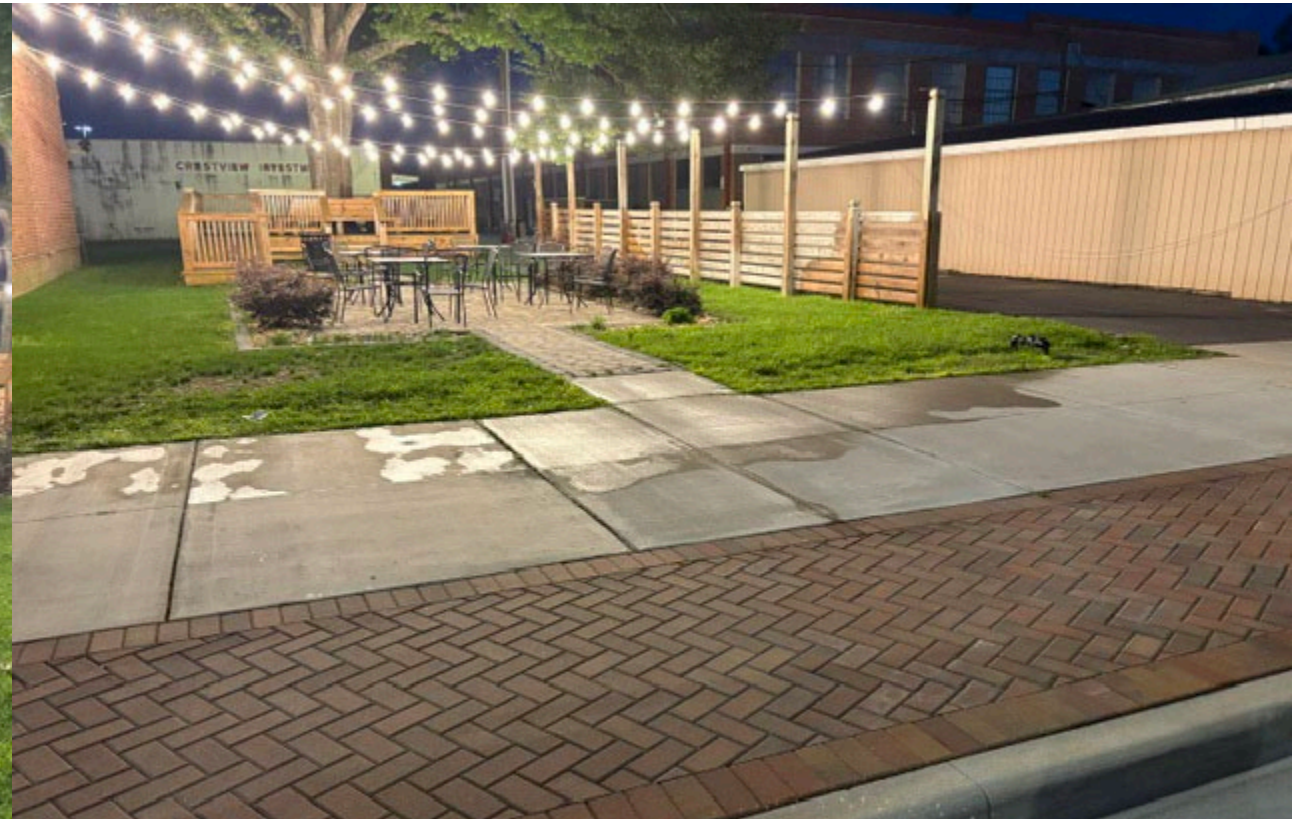
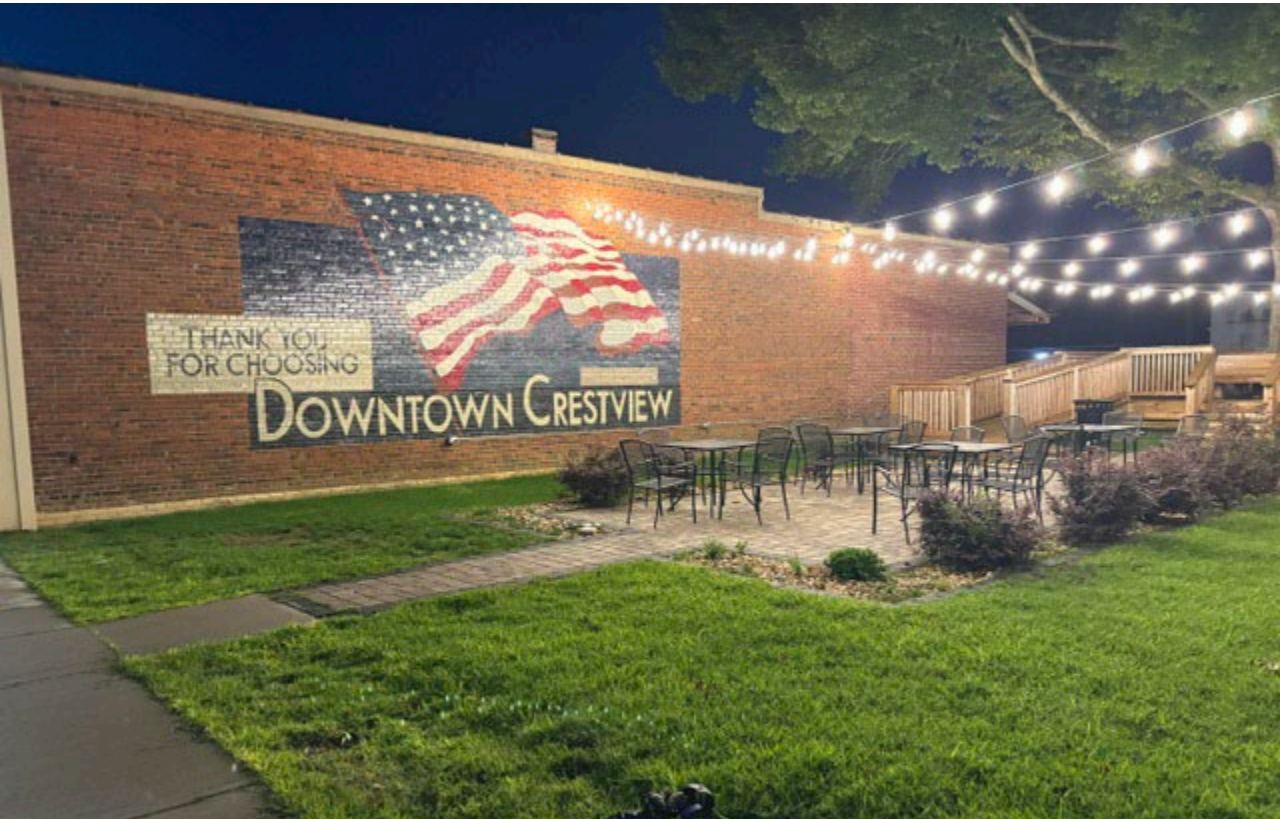


Park Improvements



This category includes both upgrades to existing park facilities and the development of new amenities and activities to attract visitors and improve community use. Parks targeted for improvements include:

- Keystone Beach Park
- Theme Park
- Natural Park
- Portions of the Rails-to-Trails corridor
- New pocket park(s)





Economic Development



These projects are designed to stimulate economic growth and support the goals of the CRA Plan. Proposed initiatives include:

- Providing landscaping and façade improvement grants for local businesses
- Hiring an Economic Development/Downtown Manager
- Marketing and branding campaigns
- Offering development incentives
- Developing a CRA-specific website





Infrastructure and Facilities



Infrastructure investments will support long-term redevelopment goals through both upgrades and new construction.

Proposed projects include:

- Property acquisition for redevelopment purposes
- Developing new facilities, such as a City Museum and Visitor Center
- Transitioning of overhead utility lines to underground systems

